

A talk on Albury's ancient buildings and their occupants, by Caroline Martin, for the Domestic Buildings Research Group in September 1998 and subsequently revised and given to Albury History Society - alburyhistory.org.uk.

CONTENTS

Three transcripts, followed by scans of their documents, plus other notes totalling some 80 pages:

Transcript: TALK SCRIPT

Transcript: SLIDES LIST AND NOTES

Transcript: ALBURY HISTORICAL DETAILS, including a few facts not used in the talks above

Scan of above: TALK SCRIPT, 6 pages

Scan of above: SLIDES LIST AND NOTES, 4 pages, 31 slides

Scan of above: ALBURY HISTORICAL DETAILS, 8 pages

Scan Millstream Cottage March 1998 and The Hame, Blackheath Lane by Caroline Martin

Scan: Madgwicks, Brook, by Caroline Martin

Scan: MISCELLANEOUS: notes from books, abstract books, court rolls, tithe maps, rent rolls, Clifford, Shalford Bradston, Albury Estate, Gerald Eve's valuation c1927, survey 1896, bailiff's notebook, Guildford Muniment Room, etc. by Caroline Martin

More details are on our [Ancient Houses & Buildings](#) page.

TALK SCRIPT, page 1)

1 MAP

The parish of Albury is one of those long thin ones, stretching from Sun Valley, over the top of Newlands Corner with its chalk ridge down to the fertile valley of the Tillingbourne and up to the greensand heath of Winterfold. It used to comprise four manors – Albury to the East, Weston Gumshelve to the West and parts of Shalford Bradstone and Shalford Clifford to the South; besides the village of Albury there were also the hamlets of Brook, Little London and Farley Green, but I intend to concentrate on Albury and some of the people who lived there.

2 WESTON WOOD

Weston Wood is a sandy ridge running E-W between the Tillingbourne valley and the North Downs, and on a shelf on the hillside was once a small settlement of bronze age people, excavated in the early sixties by one Joan Harding, of whom you may have heard (!) wearing one of her hats as an archaeologist. It was only a small place – one hut, 2 hearths, a green, 2 little fields – all now gone, excavated away for the sand. There are some large stones, some standing, some fallen, round about, of much interest to some, but said by geologists to be local stone from N side of Weston Wood. The Romans came to Farley Green – branching off Stane Street near Ockley, coming up Jelley's Hollow to build a small temple on the heath, then, we think, going down Birmingham Lane, then either up Water lane to Newlands Corner or along Guildford Lane (once known as Bloody Hedges) on to Guildford.

3 OLD CHURCH

The old church in the Park was once the parish church – started in Saxon times, just the nave & chancel are Saxon, the main building is Norman – the tower is theirs – it had a spire which collapsed later & was replaced by the shingled cupola in 19C. The S transept & aisle are 13C as is the added chancel. This was roofless and sealed off until recently, when it was re-opened by the Redundant Churches Fund – to some more the pity – I preferred it as it was. The church had been closed by Henry Drummond in 1842 and a new church built for the parishioners in Weston Street. It was designed by the architect of the Catholic Apostolic Church, McIntosh Brookes, based on the church at Thaon in Normandy & supposed to be in stone. Drummond was horrified to find, when he came back from holiday that it had been built in red brick!

4 OLD PARK HOUSE

The manor house in the Park was for a short time owned by the Bray family, Lords of the Manor of Shere. In 1637 it was bought by Thomas Howard, later 6th Duke of Norfolk as a timber framed house, who got his friend George Evelyn to enlarge it & then later to pull it down & build a new one. His brother, John Evelyn, called in to design the gardens, didn't think much of George as an architect: "George had a large mind but overbuilt everything".

1684 bought by Heneage Finch, later Earl of Aylesford, who largely rebuilt it after a fire in 1697; he sold it to his younger brother Captain William Clement Finch, a not very popular man in the village – he objected to having villagers living so close to his mansion so harassed them so much that many moved to the village of Weston Street (but where I can't work out!). He got a magistrate's order to close the road that ran from Sherbourne (the Silent Pool) to the E of Cooke's Place & also past the inn, The George, & also the road to Shere that ran to the South of his house.

1800 Samuel Thornton bought the house & had some additions made by John Soane – a new library & drawing room, a classical wing facing N with coupled Ionic columns, and a new staircase.

1811 Charles Wall continued driving the villagers out of the park

1819 The house was bought by the banker, Henry Drummond, “The richest commoner in England”, who proceeded to buy up most of the land in the parish. He it was who built the New Road from Sherbourne up to Albury Heath, closing the old road through the Park & Dog Kennel Lane, its extension South. Drummond’s daughter married Lord Louvaine, son of the Duke of Northumberland; upon her death in 1890 the estate passed to the Percy family.

TALK SCRIPT, page 2)

5 PARK HOUSE WEST

In Charles Wall’s time some Gothic alterations had been made by Henry Hakewill, and in the 1850s A. W. Pugin was instructed to “improve” the house, which by then was a complete jumble. He Gothicised the whole building, clothed it in ironstone with brick dressings, battlements, gables and 63 chimneys, all different. Pevsner describes them as “some of the worst things Pugin did”, but he was ill at the time & the practice had to be taken over by his 17 year old son, Edward.

6 PARK HOUSE SOUTH EAST

7 EVELYN GARDENS

In 1655 John Evelyn designed formal gardens out of the hillside opposite the house of 2 terraces at different levels, a half moon pond with a tunnel through the hillside (which still exists – I’ve been through it), a vineyard below and a canal made by widening the Tillingbourne. Cobbett, riding through in 19C described it as without exception the prettiest in England, that is to say, that I ever saw in England”, even though by then it was considered old fashioned.

8 The one problem they had was that there was no water at the right level for the pond and its fountains, except at Sherbourne – The Silent Pool. To bring the water down meant crossing the land of Mr Risbridger at Cooke’s Place, who was agreeable, but on his death his widow insisted that the agreement would only last for 11 years until her son came of age. The lease lapsed & was not renewed, though the water was needed, and from time to time the Risbridgers stopped the flow altogether, or took water from it, although the owners of the Park continued to clear out the watercourse. Lawsuits followed for years, until finally the last Risbridger sold to Lord Aylesford, in 1749.

9 COOKES PLACE

Named after the family who had lived in Albury for centuries. In 14C Christine Cook married John Risbridger, who held the freehold house within the manor for a rent of “5 broad arrows with barbed heads, worth 1/8, paid in cash”. The house now consists of a central open hall, early 15C, with crown post roof, an added crown post parlour wing, late 15C of 3 bays, always floored, the front bay separated off from the rest. The right hand wing is later, with a clasped purlin roof, always floored, including in the attic. The decorative gable is similar to those at Malthouse Cottages Gomshall & Great Tangley manor.

10 CATHOLIC APOSTOLIC CHURCH FRONT, 11 INTERIOR, 12 CHAPTER HOUSE

The beginning of the 19C were known as the years of ferment with 1789 the French Revolution, the Napoleonic Wars, the enclosures in England and the Industrial Revolution. People saw signs and portents in these happenings & in 1826 Henry Drummond called a conference of ministers (including the Rector of Albury) to study prophetic scripture and portents of the 2nd Coming of Christ. He was associated with a Presbyterian minister at Hatton garden called Edward Irving (hence Irvingites). They believed that the 2nd Coming was nigh, and so extreme were their views that both were excommunicated by their respective churches (Drummond was Church of England), and so they formed the Catholic Apostolic Church with Albury as its centre, though there were other churches in London. 12 Apostles (bishops) were appointed, of whom Drummond was one and in 1840 he had "the Apostles Chapel" built in the Park, designed by McIntosh Brooks, probably influenced by Pugin who designed the rose window and built of local stone & ironstone, with timber from the Park.

Members of the congregation would stand up and testify if so moved, but when Mrs Jelling, a villager from Farley Green felt moved by the Holy Spirit she was told "Sit down, this is not for the likes of you"!

The last Apostle died in 1901, and they weren't replaced, so the church as it was died out in this country, though the New Apostolic Church still flourishes abroad. The Albury church closed in 1952, but it is still kept in good repair (in 1990 repairs costing £100,000 were made – a new roof, heating system and lights) ready for the 2nd Coming.

13 LITTLE GEORGE now Grange Cottage

No houses now remain in the Park except three on the North side of the Tillingbourne. Grange Cottage was a two bay cottage with end smoke bay situated beside the old road from Sherbourne down to the old village. Its entrance is in the smoke bay, and in the 17C a wing was added to it at right angles joined by the added chimney which served both wings & was built partly in the smoke bay and partly outside in the gap between them. This wing may have been built by James Baylis, a victualler of 1663 as an inn with accommodation upstairs for travellers. In 18C it was known as the White Hart, then its name was changed to "The George" (It has always been known locally as the Little George) In 1839 it was the house of the bailiff to Drummond, later divided into two houses, but recently converted back into one for the Estate Manager.

TALK SCRIPT, page 3)

14 WESTON HOUSE Palladian House

Part of the manor of Gumshalve was sold to William Weston in the time of Edward I c1300. In 1520 it was sold to George Duncombe, whose family built a new house on the site in 1650, which was burnt down in 1720.

In 1723 Mr Sturt bought the manor and built what is known as "the Palladian House", a U-shaped house facing E-W of stone with handsome portico to garden front, the North wing was for the servants and the South wing contained study, drawing & dining rooms and a boudoir. This was sold in 1820 to pay the Godshall families' debts & was bought by Henry Drummond, who pulled it down, because, it is said, he couldn't bear to have such a grand house within sight of his own!

15 WESTON HOUSE

He built the present house in 1830 of stone & ironstone with a thatched roof, which caught fire in 1852. Someone in the crowd watching the fire said: "I wonder what fool had that building

thatched?" – it was Henry Drummond, who had the house tiled, as well as all the other houses in Albury. Louisa Bray, niece of Charles Malthus who had been living there wrote "A paltry house stands on the site (of the old)". In 1958 the house was bought by Dr. Maurice Burton, the well-known naturalist. He fell in love with the house after seeing what he thought was a woman beckoning to him from an upstairs window: "short, buxom, with the white apron of a cook or house keeper".

Traces of an Elizabethan knot garden showed up in the lawn during the drought of 1976. That the house had been important is shown by the fact that it had a pigeon house (now in Weston Yard), for 600 pairs of birds. Only Lords of the Manor or Abbots could have pigeon houses, and Elizabeth the first encouraged their building so that gunpowder could be made in this country from their guano.

TALK SCRIPT, page 4)

16 ALBURY HOUSE

A central chimney house of 2½ storeys which originally faced the road with the entrance in front of the chimney, which was extended by Anthony Devis, the artist, in the late 18C by a wing at the back to house his pictures. He was known as the "friendly man" because of his habit of carrying gingerbread in his pocket for the children and "The Man Mushroom" because when out painting he would sit under a large white umbrella – the first seen in Albury! When Devis died the house was left to his niece Ellen who ran a seminary for young ladies of fashion. The seminary was also expensive, as a item in the Farringdon Diary records that "Miss Dalrymple's expenses at Mrs Devis' school for last year (1793) amounted to £284". Mrs Devis prospered, she assumed a coat of arms & had her seal cut and her carriage painted. When she died, she in turn left it to her niece who was the mother of Martin Tupper, who had the house from 1840 & added the porch and a wing on the road side. He was a well known writer, but fell on hard times, let the house and had to mortgage to the Duke of Northumberland, who eventually re-possessed the house. Tupper was involved in the rediscovery of the Roman Temple on Farley Green, and vehemently opposed the closing of the Old Church. He was described as "a tiresome little man, and a bit of a joke".

17 ALBURY MILL

There was known to be a mill on the Tillingbourne in 1250, and until 1780 Albury House was the mill house until the two were separated and Devis bought the former. The new mill house of 1796 was burnt down in 1830 by a man called Warner. This was the time of agricultural trouble & the aggrieved man hid in the shrubbery of Albury House & shot the miller as he looked out of his bedroom window. He then set fire to the mill. (Some accounts say that he set fire to the mill first, and then shot the miller, Franks.) In 1886 the Estate bought the new mill & sold it to Ellis Laboratories who had just bought Albury House, but the two were separated again in 1970.

18 OLD POST OFFICE & DEANERY

I often wonder where the villagers went when they left Albury Park – people say Weston Street (the present Albury), Brook, Little London & Farley Green, but it is not obvious which houses they built, or lived in. However, I'm pretty sure that the three houses in the terrace and the large one at the end were built by Henry Drummond about 1840. The large one used to be called "The Deanery" and was built for one of the officers of the Catholic Apostolic Church, the terrace of three consisted of shops with accommodation over. One is called the Old Post Office, one Farriers Cottage and the third, which had been a pharmacy & the owner wanted to call it The Old Pharmacy, he was told he was not

allowed to call it that, so instead called it “Not The Old Pharmacy” *[original text corrected]*. The ground falls away at the back allowing for a basement there, with first floor and attic over. They are built of stone, clunch & ironstone, tile hung at first floor level with Pugin type chimneys (probably from Pugin’s copybook). The W end is jettied over an alleyway.

TALK SCRIPT, page 5)

19 THE OLD RECTORY

The present building consists of a mediaeval open hall house at the back, a very fine parlour wing, jettied at the end, with a central chimney house adjoining and Victorian additions. People often wonder why the rectory was so far from the church in the Park, and the answer may be that originally rectors were chaplains to lords of the manor & lived in their houses; later rectors became more independent – the one at Albury having to farm himself or be responsible for some 75 acres of glebe land in 16C. The old house at the back may be the original rectory, possibly moved: it is thought that there was once an open hall house on the site of the present chimney house to which the fine parlour was added -

20 this wing has a stumpy crown post roof, jetty, back chimneys, is panelled downstairs with a wall painting on the chimney breast. The original open hall house could have been moved back & built over cellars to provide a detached kitchen when the central chimney house was built – otherwise there seems no obvious connection between it and the front buildings until the whole was united later on.

A well known rector was William Oughtred, who came to Albury in 1600. He was famous as a mathematician who invented the multiplication and proportion signs – he taught Sir Christopher Wren & William Howard, he was a friend of John Evelyn & of Wenceslas Hollar the artist who did the painting of the Park House we saw earlier. It is said that he was more interested in mathematics than preaching!

21 Canon George Portal, a nephew of Henry Drummond, was rector in 1858 – he was a friend of Lewis Carroll who used to walk over from Guildford & visit him. He it was who built the extension on to the rectory as he had 16 children, and wanted somewhere to work in peace & quiet!

In 1920s a new rectory was built, near the new church, and the old one was sold to the Estate for the use of Lord & Lady Eustace Percy. The house was divided in 2 in 1953.

22 OLD RECTORY BARN

You wouldn’t give this barn a second glance passing on the road, but in fact it is a mediaeval glebe or tithe barn, for the rector to store his farm produce. It is of 5 bays, timber framed, now weatherboarded, with long passing braces. The roof is new after a fire 20 years ago, but originally it was hipped with queen posts (the well plates, and tie beams remain so I could see this). The N bay was always floored, the South bay had a floor added over a stable (or cowhouse) & above it lived the coachman & later the chauffeur. There was only one pair of large doors – to the East.

TALK SCRIPT, page 6)

23 BETTSWY COTTAGE & HUNTERS MOON

The first thing that strikes one about this house is its absence of chimneys – how an open hall house used to look. This is a 4 bay open hall house with two bays at the solar end jettied towards its farm yard. The other end has now been completely bricked. Three chimneys have been added at the back – the larger central one probably being for the inglenook added when the hall??? Was floored over.

24 KNIGHT & BROWNES YARD

A late 19C barn type building probably replacing the barn belonging to Bettswy Cottage. It is interesting because until recently it was a builders' yard & I was told how each part was used. It is weaterboarded on an ironstone base, with a half hipped roof and floor of clunch, and large doors to the East. It was divided up into a carpenters' shop, office, nail store, paint shop and coffin store. Outside was a distemper shed & a lean-to for the handcart. Adjoining and older than the barn was a long low shed and timber store divided in 2 with a work bench and saw pit which could be floored over, and, outside were covered ladder racks. The whole complex has now been converted into a (very expensive) house!

25 LEFT HAND COTTAGE & CREG-NY-BAA

Once one house this is an early chimney house of four bays with an added chimney at the W end, perhaps when it was divided in 2. It may have been a small farm house of four bays, always floored, with a floored attic, fine ironstone external chimney with room for a bacon loft and a small outshot at the back that may originally have been a lean-to, for there is a blocked window on that side. The second bay has four centred door heads in the partition as though to a cross passage – the door to Creg-ny-Baa could have been the original entrance & that half of the house the service end.

26

27 ROSE & SAUNDERS COTTAGES

When the owner of Rose Cottage told me that he thought his house had been a barn. I wondered, when I saw the brick & tile hung building. However, it turned out that he was right – the house had been built over and around a three bay ½ hipped barn with open cattle shelter or shed at the end. The original roof remained inside the new & the original bay posts were inside the new brick walls. A central chimney was added with bread ovens (hardly used) to serve both houses. It may have been a hay barn for Left Hand Cottage next door, for it has only one set of doors, the bay posts had jowls and the queen posts were raking. An unusual feature was the way a longitudinal spine beam had been built upstairs & from this sloping ceiling joists ran up to the purlins, so that each bedroom had a “pitched” roof for its ceiling.

28 LOWER NORTHFIELD

Gavin Maxwell's mother was Lady Mary Percy, daughter of the 5th Duke of Northumberland (her husband having been killed in 1914, 3 months after Gavin's birth) who owned much of Albury & the surrounding land. When Gavin was 16 he was seriously ill and spent many months in Lower Northfield recuperating. Lady Mary was a reclusive as the Percy's were Catholic Apostolic it was not easy to find another husband. So Gavin visited friends & relations in Albury & learnt to drive & reverse up & down the Park drive.

29 WILLIAM IV

To end on a less serious note we will go over the heath & down to the William IV pub in Little London which started life as a 2 bay timber framed agricultural or industrial building, thought to be

late 15C. A 1st floor was added with a smoke hood & outshot, and later an outside chimney and a 19C bride wing.

30, 31

Last autumn I was walking up to the William to the library van, which used to stop there, when I saw what appeared to be a burglar in his striped jersey hanging by the neck outside. Further investigation showed that it was, in fact, a French onion seller complete with bicycle and string of onions, who was swaying in the breeze – most unnerving. On making enquiries I was told that at the time the year before when the inn was expecting its delivery of the new Beaujolais the French lorry drivers were on strike and to show their annoyance someone hung up this figure, much to the amusement of the locals who requested it again last year.

END OF TALK SCRIPT

SLIDES LIST AND NOTES Page 1)

1. MAP Albury Parish= long, thin, from Sun Valley, over Newlands Corner- chalk, down to fertile Tillingbourne valley, up to greensand heathland of Winterfold. **4 Manors** = E- Albury, W = Weston Gumshalve, S – Shalford Bradstone & Shalford Clifford. **3 hamlets**, Brook, Little London, Farley Green. Concentrate on Albury & people who lived there.

2. WESTON WOOD Sandy ridge, E-W between Tillingbourne & North Downs. Bronze Age settlement on shelf in hillside, excavated by Joan Harding – archaeologist. Small place – 1 hut, 2 hearths, quern, 2 small fields – all gone – excavated for sand. Romans – Farley Green – Stane Street, near Ockley – up Jelley's Hollow – small temple, down Birmingham Lane, either up Water Lane – Newlands Corner or along Guildford Lane (Bloody Hedges).

3. OLD CHURCH Once parish church. Saxon start, main build is Norman – Norman tower had spire (collapsed), replaced by 19C shingled cupola. South transept (later decorated by Pugin), aisle & added chancel = 13C. Later roofless until recently reroofed & re-opened by Redundant Churches Fund. Closed by Drummond in 1842 – new church – Weston Street by McIntosh Brooks (also Catholic Apostolic Church). Red brick, not stone, based on church at Thaon in Normandy.

4. OLD PARK HOUSE Manor House once Bray's. 1637 bought by Thomas Howard 6th Duke of Norfolk – timber framed, enlarged by George Evelyn, friend, who later pulled it down & replaced. John Evelyn, brother – “no good as architect” – “George has a large mind, but overbuilt everything”. John = gardens. 1684 bought by Heneage Finch, Earl Aylesford – rebuilt after 1697 fire. Sold to brother, Captain William Clement Finch – unpopular – harassed villagers – moved to Weston Street. Magistrate's order to close road from Silent Pool, E Cookes Place, past George Inn to Park, also Shere road, S of house. 1800 Samuel Thornton – additions by Soane – library, drawing room, classical wing facing N. 1819 Henry Drummond, banker, “Richest commoner in England”. Large purchases. Built New Road – Sherbourne – Albury Heath, closed old road Dog Kennel Lane. Daughter married Lord Lovaine – son Duke of Northumberland. On her death, 1890, Percy's gained estate.

5. PARK HOUSE W Charles Wall – some Gothic alterations by Henry Hakewill. 1850s A. W. Pugin “improved” house – then a complete jumble – Gothicized it. Ironstone, brick dressings, battlements, gables, 63 chimneys. Pevsner “Some of the worst things Pugin did”. Ill, practice taken over by 17 year old Edward.

6. PARK HOUSE SE Part earlier house? Remains Soane block.

7. EVELYN GARDENS 1665 John Evelyn – formal gardens from hillside, 2 terraces, different levels, ½ moon pond, tunnel, vineyard, canal. **Cobbett 19C**: “without exception the prettiest (garden) in England, that is to say that I ever saw in England – old fashioned by then.

8. TERRACE & POND Problem= no water for pond & fountains. Sherbourne – across **Risbridger’s land (Cooke’s Place)**. **Widow** = 11 years only till **son’s** coming of age. Lease ran out. Risbridgers stopped flow and took water, though Park owner cleaned. Lawsuits – **last Risbridger** sold out – **Heneage Finch 1749**.

SLIDE LIST & NOTES Page 2)

9. COOKES PLACE Local family. 14C **Christine Cook** married **John Risbridger** – freehold of house within manor – rent: “5 broad arrows with barbed heads, worth 1/8, paid in cash”. **Central** open hall & early 15C crown post, late 15C added crown post **parlour wing**, floored, front bay separate. Later **R.H. wing** – clasped purlin roof, always floored. Attic. Gable like Malthouse Cottages & Great Tangley manor.

10. LITTLE GEORGE Grange Cottage. 1 of 3 remaining N of Tillingbourne. **2 bay** cottage & **end smoke bay**, beside old road. **Entrance** in smoke bay. **17C wing** at right angles, joined by added chimney – pantry in smoke bay – in gap for wing. ?Built by **James Bayley**, victualler **1663** as inn & accommodation. **18C** = “White Hart”, later the George (locally Little George). 1839 = Drummond’s bailiff’s house, later 2 houses, now Estate Manager’s.

11. CATHOLIC APOSTOLIC CHURCH 19C “Years of Ferment”. French Revolution, Napoleonic Wars, English Enclosures, Industrial Revolution, “Signs & Portents”. **1826** Henry Drummond – conference of ministers (including Albury) to study prophetic scriptures & portents of 2nd Coming. Hatton Garden Presbyterian minister **Edward Irving**, 2nd Coming = nigh. Extreme views caused excommunication (Drummond = C of E). Formed Catholic Apostolic Church. Albury = centre, other churches in London. 12 Apostles (Drummond one). **1840** Apostles **Chapel built** by **McIntosh Brookes**, Pugin influence

12. INTERIOR Pugin = E window. Local stone & ironstone, wood from Park.

13. CHAPTER HOUSE Members testified. **Mrs Jelley**, Farley Green **villager** moved by spirit stood up, told “Sit down, this is not for the likes of you”. **1901** last Apostle died, not replaced, no succession, therefore church died out in this country. **New Apostolic Church** flourishes abroad. **1952** church closed, kept in repair for 2nd Coming. 1990 £100,000 repairs – new roof, heating & lights.

14. WESTON HOUSE Palladian C1300 part manor Gumshelve sold to William Weston. **1520** sold to **George Duncombe**, whose family built new house **1650**, burnt **1720**. **1723** Mr Sturt bought built “**Palladian House**”. U-shaped, facing E-W stone in the Italian style handsome portico to garden front – N wing = servants, S wing = study, drawing room, dining room, boudoir. E front by John Hassell 1823, (Garden). **1820** sold to pay Godshall family debts, bought by **Drummond** – demolished. Couldn’t bear site of grand house so near his own! **Staircase** > 158 High Street [Guildford].

15. WESTON HOUSE ENTRANCE 1830 built present house – stone, ironstone, thatch. **1832** Burnt. “I wonder what fool had that thatched?” “That fool won’t make the same mistake again – Drummond. All Albury houses tiled. **Louisa Bray**, Charles Malthus’ niece “A **paltry** house stands on the site (of the old). **1958 Dr. Maurice Burton**, naturalist, bought. Beckoning woman “short, buxom, with the white apron of a cook or house keeper”. **1976 Drought** – Elizabethan knot garden. Important house – **pigeon house** (now in Weston Yard), for 600 pairs birds. Only Lords of Manors & Abbots could have

pigeon houses. Elizabeth I encouraged building for gunpowder from their guano – previous only made abroad – knowledge imported.

16. ALBURY HOUSE Central chimney house, 2½ storeys, faced road, entrance in front of chimney. 18C back wing by Anthony Devis for pictures. “Gingerbread man” “Man Mushroom”. House left to niece Ellen, had seminary. Called “Mrs”. Expensive, Farringdon diary “Miss Dalrymple’s expenses at Mrs Devis’ school for last year (1793) amounted to £284”. Ellen prospered, acquired coat of arms, had seal cut & her carriage painted. House left to her niece, Martin Tupper’s mother – 1840 he had house – added porch and wing. Well known writer, fell on hard times, mortgaged house to Duke who eventually re-possessed. Tupper involved in Farley Green temple. Vehemently opposed to closing Old Church. “A tiresome little man, a bit of a joke”.

SLIDE LIST & NOTES Page 3)

17. ALBURY MILL 1255 a mill known. Till 1780 House & mill were one till Devis bought house. 1796 new mill house built. 1830 burnt down by Warner. Aggrieved labourer set fire to mill & shot miller, Franks at bedroom window, from shrubbery. Or vice versa. Last person to be hanged for arson in spite of Drummond’s pleading. 1886 Estate bought, sold to Ellis Laboratories – who united house and mill. 1970 separated again.

18. DEANERY & OLD POST OFFICE Where did dispossessed people go? c1840 Drummond built “Deanery” & row of 3 shops with flats over. “Deanery” for officer of Catholic Apostolic Church. Terrace of 3 = “Old Post Office”, “Farrier’s Cottage”, “Not The Old Pharmacy” [*original text corrected*]. Ground floor shops – ground (falls at back allowing basement, first floor & attics. Stone, ironstone, clunch, tile hung at 1st floor, Pugin (copybook) chimneys, West end jettied.

19. OLD RECTORY Mediaeval open hall house at back, jettied parlour wing with side chimneys, central chimney house & Victorian addition. Why so far from church? Originally rectors were live-in-chaplains in manor houses. Later became more independent. 16C 75 acres glebe land to farm or be farmed. Perhaps old house at back was original rectory, possibly moved – odd position.

20. ?Originally open hall house where central chimney house is – parlour wing added – stumpy crown post, jetty, side chimneys, garderobe, fine panelling, wall painting on chimney breast. Perhaps old building moved back over new cellars as kitchen. New C.C. [central chimney] house 1610 William Oughtred = rector. Famous mathematician. Multiplication & proportion signs. Taught Wren & William Howard (Duke Norfolk), friend John Evelyn & Wenceslas Hollar who did painting of Park House. More interested in maths than teaching! End 18C Robert Malthus = possible rector. Author “Essay on Population”. Father lived opposite rectory. Hare lip, cleft palate, advised against church. “only wanted country curacy”. Curate of Okewood Hill, near Ewhurst – saw poverty in Weald as he rode over – more births than deaths. Thought about population, birth control, struggle for existence. Darwin acknowledged his work – he used to stay at Haredean, study Temple earthworks & watch trains.

21. 1858 Canon George Portal, Drummond’s nephew. ?Friend Lewis Carroll. Built Victorian extension for quiet – 16 children. 1920 New rectory built. Old one sold to Estate for Percys. 1953 divided in 2.

22. OLD RECTORY BARN Mediaeval glebe or tithe barn. 5 bays, now weatherboarded – perhaps originally wattled. Timber framed, long passing braces. Fire 20 years ago. Hipped, 2 queen posts,

wall plates & tie braces remain. North bay always floored, South bay added floor, over stable for coachman/chauffeur. One pair doors only – East.

23. BETTSWY COTTAGE & HUNTERS MOON Late 16C. 4 bay open hall. 2 bays at solar end, floored, jettied to yard. Other end bricked. Three chimneys added at back. Hipped. Farm house.

24. KNIGHT & BROWNES YARD Late 19C barn type, ?replacing barn. Low part may be original. Weatherboarded on ironstone base, ½ hipped roof, clunch floor, large doors to East only. Builders' – carpenters' shop, office and nail store, paint shop, coffin store. Distemper shed, lean-to for handcart. Low building – Timber store, work bench, sawpit (could be floored). Covered ladder racks. Now expensive house.

25. LEFT HAND COTTAGE & CREG NY BAA Early chimney house – 4 bays. Added chimney – West end. Small farm house, always floored, with attic. Ironstone external chimney with room for bacon loft. Outshot at back & originally lean-to – covered window. 4 centred door heads in partition ?for cross passage – door to Creg ny Baa correct. Latter probably service end – not seen.

26.

SLIDE LIST & NOTES Page 4)

27. ROSE & SAUNDERS COTTAGES Converted barn. 3 bay barn, ½ hipped with possible catslide open shelter at East end. Bay posts & original roof remain inside. Brick shelter at East end. Bay posts & original roof remain inside. Brick walls, tile hanging, tiled roof. Added central chimney & 2 bread ovens for 2 houses. One set doors, jowl posts, raking queen posts. Longitudinal spine beam, sloping ceilings off it. ?Barn for L.H. Cottage nearby.

28. LOWER NORTHFIELD Gavin Maxwell's ("Ring of Bright Water") mother = Lady Mary Percy, daughter 5th Duke of Northumberland. At 16 Gavin very ill, recuperated here. His father killed 1914, 3 months after Gavin's birth. Gavin visited friends in the village. Learnt to drive up and down Park drive.

29. WILLIAM IV Little London. Originally 2 bay timber framed agricultural or industrial building – no upper floor, thought late 15C. 1st floor added with smoke hood & outshot, later outside chimney & 19C brick wing. Once "Garibaldi". End 19C "William IV".

30. Last autumn – library van. ?burglar – striped jersey – hanging.

31. French Onion Seller – beret, bicycle, string onions. 1996 Beaujolais time lorry drivers on strike. Locals requested again last year.

History Society photos

2. Weston Wood from church
3. Old Church L.2 July 90?
4. Old Park House Hollar L.6
5. Park House West L.14. (10)
6. Park House South East L.17 4/90
7. Evelyn Gardens 19/3/96 1A

8. Evelyn Gardens Terrace & Pond 4/90?
10. Little George 259° 2-024
11. Catholic Apostolic Church HD 24.7 Charities 10
12. Catholic Apostolic Church Interior 16. WB. AP40.75. 11/85. W37
13. Catholic Apostolic Church Chapter House WB11
14. Weston House J Hassell AP9 10/89
15. Weston House Entrance 264b 2-033
16. Albury House 59
17. Mill House & Laboratories 47 11/85
18. Deanery, Old Post Office 5 AP25
21. Old Rectory. Skeltons 85 II C26
24. Knight & Browne's Yard 302b 2-133
25. Left Hand Cottage 305b 2-140
28. Lower Northfield 306b 2-143
29. William IV 69 I-086

END OF SLIDES AND NOTES

ALBURY HISTORICAL DETAILS page 1), includes a few facts not used in the talks above.

Transcribed from handwritten notes below by Caroline Martin. *Words in doubt or not deciphered are indicated by xxxxx.*

Long parish – Sun Valley, Newlands Corner – chalk, fertile Tillingbourne valley, greensand/heathland of Farley Green & Winterfold

4 Manors Albury, Weston Gumshalve (pt. Shere), Shalford Bradstone & Shalford Clifford (Brook & Farley Green)

? Stone Age 4000B.C.

Bronze Age Settlement Weston Woods, now gone, excavated by Joan Harding in 1961-1963

Domesday 1086 – Blackheath Hundred – Elderberrie (the old Bury i.e. Roman)

Romans Stane Street divided at Rowhook Church & mill, branch to Farley Heath (temple) & on to (S) Ilchester. Jelleys Hollow - Blackheath Lane - Water Lane - Newlands Corner & Guildford Lane Bloody Hedges

House

15C. Bray family

1637 Thos Howard, Earl Arundel 6th Duke of Norfolk, friend of Evelyn

George Evelyn architect for enlarged house. John Evelyn did gardens

1684 Heneage Finch, later Earl Aylesford, bought

1780 Clement Finch bought

1800 Samuel Thornton MP bought. Widened and made road Shere/Newlands Corner

1811 Charles Wall

1819 Henry Drummond "richest commoner in England". Albury for health

1860 Lady Lovaine (1845 married Lord Lovaine, later 6th Duke (or father?))

1890 Percy family

George Evelyn "had a large mind, but overbuilt everything" - John Evelyn. Tunnel formed by land washed away by water.

1645 Tudor timber framed drawn by Hollar c.1500 (Right hand side ?by G. Evelyn?)

1648-1676 Much pulled down, new designed by G. Evelyn.

1697 Largely rebuilt after fire for H. Finch

1800 Soane added main staircase & new library now drawing room

1815 Gothic alterations by Henry Hakewill for C. Wall.

C.1850 Pugin – ironstone, brick dressings, battlements, gables, 63 different chimneys – "some of the worst things Pugin did" – Pevsner (Augustus Welby Northmore Pugin died 1852 age 40, ill 1847, completed by son Edward)

Gardens

Two parallel Terraces, pond, tunnel. Canal from Tillingbourne

1822 Cobbett "without exception the prettiest in England, that is to say that I ever saw in England". Then old fashioned.

Roads

South of house to Dark Lane Cottage by Shere ford.

Road from Silent Pool past Cookes Place & Little George to Dog Kennel Lane

1784 Captain Finch permission closed Shere Road

1785 " " " " North South road. Started harassing villagers who moved to Weston Street

Drummond built New Road

Charles Wall continued this, building new cottages in Weston Street

Drummond partner in Drummond's Bank

1826 people met in Park to study scriptures concerning second coming.

1832-1835 Twelve apostles, including Drummond called. Drummond left Church of England

1840 Church built, “apostles chapel”, later cathedral by William MacIntosh Brookes and Pugin 1847

Irvingites from Edward Irving, Presbyterian minister Hatton Garden

1842 Old Church closed and new built in brick “in imitation of the church at Thaon in Normandy” by MacIntosh Brookes

1910 Last apostle died

Old Church Saxon work nave. Norman tower. 17C spire added, replaced by cupola. 13C chancel. 14C South aisle. South transept. Pugin mortuary chapel for Drummonds 1839. 1974 Redundant Churches.

ALBURY HISTORICAL DETAILS page 2)

Own Photos

1 My map

9 Cooke’s Place

19,20,21 Old Rectory

22 Old Rectory Barn

23 Bettswy Cottage

26 Left Hand Cottage

27 Saunders & Rose

30,31 Onion Seller

AHS Photos

3 Old Church South

4 Old Park House

5 Park House front

6 Park House South

11,12 Catholic Apostolic Church, Front, Interior

13 Catholic Apostolic Church Chapter House

14 Weston House, Palladian

16 Albury House

17 Mill

18 3 Cottages

Wanted

2 Weston Wood

7,8 Evelyn gardens

10 Little George

15 Weston House West

24 Knight and Browne’s Yard

25 Left Hand Cottage & Creg-ny-Baa

28 Lower Northfield

29 William IV

Lower Northfield

Gavin Maxwell, 16 – Hensch’s purpura – internal bleeding – nearly died in Weybridge (from Stowe School). 1930 spent xmas at Cooke’s Place with mother. Learnt to drive on Park Drive (pp 24,25,26). Lady Mary Percy daughter 5th Duke – Catholic Apostolic widow, father killed in 1914.

Late Bronze Age transition to iron age c500BC Homestead. Short occupation. Weston Wood – greensand, spring water. Tillingbourne – fish., clay – pots. House. Cultivated plots. Flint tools. Pots. Quern. Outside hearths.

Mound not early, could be 18C, result of quarrying or gardening.

Stones could occur naturally in ground N of Weston Wood. Manning and Bray 3 standing stones, 2 single, one 10’ long x 5’8”. Geological Survey Memoir – Dines & Edmonds quoted Viscountess Hanworth 63

Little George, Grange Cottage 2 bay mid 16C end smoke bay. ½ hipped roof clasped purlins, entrance in smoke bay. Large end chimney in smoke bay projecting out into added wing at right angles (2 bays again). Ironstone galletted late 17C. 1663 Victualler = James Baylis. 1708 Publican/owner = Edward Shephard. 1743 James Homes. 1782 Richard Jarlett. 1748 = White Hart. 1790 The Goerge. 1839 Bailiff's House, later divided into 2 – gardener's house & Bothy. Now Estate manager's house.

Cookes Place John Baker [drawing]. Central open hall 1420, crown post, LHS parlour wing beyond service – 3 bay always floored – chimney with plates & ties. Plain central post – front bay separate. RHS side purlin – floored – headroom for door in attic. Close studding. Decorative gable as Malthouse Cottages & Great Tanglely manor.

ALBURY HISTORICAL DETAILS page 3)

Catholic Apostolic Church

By 19C Years of ferment abroad (1789 French Revolution. Napoleonic Wars). English enclosures from 1800. Industrial Revolution. High price of corn.

1826 Drummond called conference of ministers including Albury? McNeil & laymen to Park to study prophetic scriptures & portents of 2nd coming.

1822 Presbyterian minister Edward Irving minister Caledonian Chapel Hatton Garden was associated with Albury

1834 Excommunicated

1835 12 believers called apostles appointed, with Albury as centre. Drummond 2nd. He left Church of England.

Apostles as in New Testament. Prophets – spoke on impulse. Evangelists. Pastors. Each church had chief pastor (angel)

1834 7 churches in London

Apostles divided Christendom into 12 (tribes) Drummond's being Benjamin (Scotland & Protestant Switzerland) & travelled for 3 years learning in their territories.

1853 Gordon Square church

1840 Drummond built church "Apostles Chapel". Architect McIntosh Brookes. £20,000 Pugin influence

Canada, New York, Australia, New Zealand, South Africa, Europe.

When apostles died they weren't replaced – 1855-1901, so no ordinations could take place. Last coadjutor in Albury Edward Heath died 1929.

Closed? 1950. 1954

New Apostolic Church in Germany, South Africa, America, Canada, India, Pakistan, Korea, Africa, Central America.

Architect M Brookes (after William Wilkins University College London & National gallery ?) Ewhurst stone Ironstone

Timber from Park. Pinnacles rebuilt Bath stone.

Builder John Browne

1836 3 vestries added Shalford builders

Rose window – Pugin. Clock from stables of Park. Organ: Holdich, water powered – 1965 – electric.

Pews, chancel slates, tabernacle, lamp stands – Anthony Browne.

1990 Repairs £100,000 – new roof, heating system, lights (? Last priest 1971) – Paddington, Albury 1952

Built on site of small farm – mainly rick yard

Bungalow older than church (beside old road?)

Nave, no aisles, octagonal chapter house. Vestries added. Tower, open timber roof, stained glass in transept windows by Drummond's daughter Lady Rokewood Gage

Risbridgers Cooks in Albury for many centuries (13th). 14C Christina Cooke married John Risbridger

Freehold land within manor – rent “5 broad arrows with barbed heads worth 1/8, paid in cash”

1655 Evelyn designed 2 terraces, half moon pond & vineyard below terraces. Tillingbourne widened as canal. Water needed for pond and vineyard. Owned Silent Pool but had to cross Risbridger land.

1661 Widow Joan agreed to lease Henry Howard a strip of land for 11 years till son of age – lease elapsed, not renewed.

1673 Risbridger said no title to strip & interrupted water. Howard paid. Finch repaired & Risbridger took water, till he died. Widow cut off water. Finch sued. Won. Sherbourne water course – water could be taken by Risbridger.

1745 Lord Aylesford shut off water at Silent Pool.

1749 Risbridger sold to Lord Aylesford/Heneage Finch.

ALBURY HISTORICAL DETAILS page 4)

Weston House

Weston part manor Gumshalve sold to William Weston - - - - - 1272 – 1307

1331 Another had houses in Albury, Clandon & Send.

(1422 Anne Weston married Thomas Slifelde)

1520 sold to Geoffrey Duncombe. Built house 1650, burnt 1720

1723 Sturt bought Manor, mansion house & Estate (who built present 1804 house)

“Palladian house” probably built 1723 – 1727

1729 Robert Godshall bought

1752 Sarah Godshall married William Man – who added Godshall to his name. died 1798

Rev. – Sam - married Godshall. sold to Drummond

(Robert Clive & Malthus residents)

Louise Charlotte Bray 1860

Aunt Charlotte Malthus died at Weston House in 1821

In June Uncle Godshall died. Weston House sold to pay his debts & was pulled down. Weston House built in stone in the Italianate style . . . handsome portico in C garden front. North wing = servants. South uncle's study, drawing & dining rooms, aunt's boudoir. Staircase removed to County Club, 158 High Street (not Guildford House). A paltry house stands on the site of Weston Hassell 1823

1820s present house (29 rooms!) 1830. Burnt 1852

1958 Maurice Burton bought from Estate. Ghost "house keeper type, short, buxom, with the Weston Lodge apron of a cook or housekeeper"

Tudor garden [was visible in] 1976 drought

Flint tools. Tudor mansion bricks. Brass.

Pigeon House

600 pigeon holes 1550. Elizabeth encouraged Lords manor to build pigeon houses for guano for gunpowder after she imported a German to teach English how to make it. Only Lord of manor or Abbott could have pigeon house.

Lots of Weston names – Weston yard, lea, farm. (? More important than Albury?)

"I wonder what fool had this house thatched?" "That fool won't make the same mistake again" village de-thatched?

Gavin Maxwell visited 1960

Jacobites planted Scots pine in gardens to indicate sympathies. Did Weston House have a Charlie tree (West Country) ?

Ice House (Game larder)

1910 Pigeon House complete. Octagonal, 1550. 19' high, 24' across, tiled conical roof 40' to top

Parallel bonding 2" bricks – most stone & round

ALBURY HISTORICAL DETAILS page 5)

Albury House

Extended late 18C by Anthony Devis – large room at back for pictures "gingerbread man" Man mushroom with umbrella

1840 Martin Tupper

1255 House on site

1780 House & mill separated, sold to Anthony Devis

1816 Devis' niece Ellen had "seminary for young ladies of fashion"

1820 House left to her niece Ellen, mother of Martin Tupper

1840 Martin came

1852 Tupper added wing. Mortgaged house to Estate

1887 Duke possessed house

1959 Ellis bought house

Mid 16C Collyer ownership

½ brother Arthur Devis was portrait painter

Ellen, called Mrs, "A dignified & masterful lady, she was the mistress of a highly respected seminary for young ladies of fashion. The seminary was also expensive as an item in the Farrington Diary records that Miss Dalrymple's expenses at Mrs. Devis' school for last year (1793) amounted to £284. Mrs. Devis prospered, she assumed a coat of arms and had her seal cut and carriage painted."

Mill

1255 mill on site

1796 mill house

1830 Mill burnt by Warner – hanged 1831, having shot at Franks the miller, tenant of Cooke, owner

1886 Mill sold to Estate

1950 Ellis bought mill. separated in 1970

1782 Sun Insurance firemark 9/- William Ryde at Albury, Surrey Mxxxxxx on his Water Corn Mill only at Albury aforesaid. Brick Timber & tiled, not under £300

1780 Hannah made over mill to son who sold it to William Ryde

Albury House let to Mr. Smallpiece in whose shrubbery James Warner hid after he had set fire to the mill. It was from there that he fired a shot at Mr. Franks as he looked out of his bedroom window in the mill house

?employee rebuked for cruelty to a horse?

Once source says shot first, then fired mill. Drunk. Age of unrest, rick firing common

Malthus lived "The Cottage"

Darwin stayed at Haredene & liked to watch trains go by.

ALBURY HISTORICAL DETAILS page 6)

1870s -1880s days of prosperity over

Tupper let house "Surrey in the delightful neighbourhood of Guildford & Dorking, within 1½ miles of a station on the South Eastern Railway. A charming family residence, standing on a dry light soil & screened from the north wind by a well wooded hill in the rear. It is approached by a carriage drive & entered through a glass porch with encaustic tiles & contains 8 principal & second bedrooms, 4 servants' rooms & 3 dressing rooms. Drawing room 30' 6" x 18' 6" & 16' high with casement opening on to lawn, antique dining room, breakfast room with library of books, house keeper's room, good domestic offices. Stabling for 5 horses, coach house, man's room, cow house & Interesting xxxxxx outbuildings. There is an ornamental timbered lawn, pleasure grounds, shady walks, greenhouse with abundance of grapes, walled kitchen garden well stoked with fruit and meadowland, in all about 9 acres. Hunting with the Surrey Union. The residence is very comfortably furnished & rooms are hung with valuable paintings. Rent 360 guineas per annum or 14 gns/week in the summer months."

Involved in rediscovering of Temple & opposed closure of Old Church. "A tiresome little man, a bit of a joke."

House divided into 3.

Old Rectory Barn

5 bay mediaeval barn, timber framed, now weatherboarded, new roof after fire. Glebe barn – for tithes or crops from glebe land (15 acres). - Jowl - posts. Long passing braces. Probably wattles, not necessarily daub. Boarded intermediary to mid rail. Sill on ironstone plinth. New roof 20 years ago – originally hipped 2 queen posts. Doors to east side only. North bay floored. NE corner (new floor) chauffeur's room. South bay now floored partitioned off - ?stable or cowhouse. Chauffeur lived above 70 years ago.

Old Rectory

Mediaeval house at back, open hall, kitchen ?brought later?, arched braces, hipped with goblet. 18C central chimney. South side quite different xxxx panels. Crown post, outside side chimneys, close studding, wall painting on stumpy chimney breast. 2 rooms, stairs between, garderobe. Central chimney house 17C, may have replaced open hall – 3 bay. Now ½ hipped, may once have been hipped. Closed purlins.

Bettswy Cottage, Hunters Moon late 16C

4 open hall house with 2 bay jettied solar. Arching braces. 3 back chimneys -? central, replacing inglenook of hall when floored over ?end bay surviving now brick. Jettied to farm yard. - dim. pr – rafters.

Knight & Browne's Yard

Late 19C barn type build & probably replacing earlier. Ironstone, weatherboarded builders & undertakers. ½ hipped. Timber shed earlier. Clunch floor. Large doors to east. Divided up for carpenters' shop, office, paint shop, coffin store. East side distemper shop. Lean to for hand cart. Timber shed in 2, work bench & saw pit (could be floored over). Timber store. Covered ladder racks outside.

ALBURY HISTORICAL DETAILS page 7)

Left Hand Cottage, Creg-ny-Baa

Once one house, early chimney house of 4 bays, added chimney west end. Square framing. Sinuous tension brace. Outshot at back. Ironstone chimney with room for bacon loft. Present door beside chimney but Creg-ny-Baa porch could have led into service bay as cross passage. 2 bays in – hearth – room. 4 – centred – door heads in partitions. Jowls. Farm house. Creg-ny-Baa – service end. Attic storage, ?Rose Cottage its barn?

Rose & Saunders

3 bay barn with added bay. Added central chimney with bread oven originally ½ hipped. New roof over top, gabled. Bay may have had catslide roof over cattle shelter. Walls built round – brick, tile hung. Bay joints, jowls, raking queen struts. ?Hay barn – door is north only, converted by 1839. Upstairs pine walls divided bays in 2 – rafters run up from these to purlins making one slope of ceiling, other slope = roof.

Farriers, Not The Old Pharmacy & The Old Post Office 3 shops with living accommodation over

Ground falls away, so extra floor at back. 2 + attic at front. Stone, clunch, ironstone. C1840. Upper storey tile hung. West end jettied over alley. Entrance door heads 4-centred, unit with window. Door & window of Not The Old Pharmacy came from Steventon, Hampshire, where Jane Austin's father was chaplain. Shop & parlour on ground floor. Basic kitchen & 3 beds in attic. Previous cottages pulled down. Built against School House.

Albury House

Central chimney, 2½ storeys. Stair turret, living at back, front originally faced road – north. 2 rooms each floor, entrance/chimney bay. Stair Turret between south wing – stair brought in? Staggered butt purlin. Wing at back ?rebuild of earlier service wing.

William IV

2 bay timber framed, 1½ storeys, jowled ?late 15C. "Farm" building converted with 1st floor & outshot, smoke hood. Outside chimney 17C. 19C brick wing. Curved tie beam arching braces.

ALBURY HISTORICAL DETAILS page 8)

Alan de Pointon, before 1285, granted 4 acres of land on which to build a house. (Said to have been 13C behind "present" Rectory, lately pulled down – no sign on maps) ?Building at back of Old Rectory? So far from church? Rectors were often private chaplains & lived in big house. By early 17C 75 acres glebe land with barn & house.

1574 – 1660 William Oughtred. 1610 came to Albury. Gifted mathematician, invented x [for multiplication] and : trigonometrical abbreviation signs. Taught William Howard, Christopher Wren. More interested in maths than preaching. Friend of John Evelyn & Wenceslas Hollar – artist, Elias Ashmole – neighbour & founder of Ashmolean Museum.

Robert Malthus

Author "Essay on Population". Curate c1798, son of Daniel who lived in Albury. Cleft palate & hare lip & only wanted country curacy. Curate Okewood – riding there saw poverty and excessive births (more than deaths) made him think about populations & struggle for existence. Darwin acknowledged Malthus' work – visited Haredene & watched trains! Brother lived at "The Cottage".

Sister [Anne Catherine Lucy Malthus b1762] married Samuel Man Godshall of Weston House. [Sister Mary Anne Catherine Malthus b1771 married Edward Bray.]

Canon George Portal

1858 rector. Nephew of Drummond. Visited by Lewis Carroll. Built extension. 16 children. Founded Surrey (later National) Deposit Friendly Society "Cock & Hen Club" – monthly payments.

1921 New Rectory, (Canon Frederick Norman Skene) sold privately then leased Estate – Lord & Lady Eustace Percy. During war Watsons, then Fitzherberts – Catholics – mass in upstairs room. 1953 house divided in 2.

END OF ALBURY HISTORICAL DETAILS

Task to D. B. 2. G. 9/1/98

1 MAP. The parish of Albury is one of those long thin ones, stretching from Sun Valley, over the top of Newlands Corner with its chalk ridge down to the fertile valley of the Tillybourne and up to the greens and heath of Winterfold. It used to comprise four manors - Albury is the East, Weston Gunshelve is the West and parts of Shalford Brestone and Shalford Clifford is the South; besides the village of Albury there are also the hamlets of Brook, Little London and Farley Green, but I intend to concentrate on Albury and none of the people who lived there.

2 WESTON WOOD

Weston Wood is a sandy ridge running E-W between the Tillybourne valley and the ^{North Downs} ~~Downs~~, and on a shelf on the hillside was once a small settlement of bronze age people, excavated in the early sixties by one Joan Harding, of whom you may have heard (!) wearing one of her hats as an archaeological expert. It was only a small place - one hut, 2 hearths, a ~~quadrangle~~ ^{grain} stone, 2 little fields - all now gone, excavated away for the road. There are some large stones, some standing, some fallen, round about, of much interest to some, but said by ~~archaeologists~~ ^{palaeontologists} to be local stone from N. side of Weston Wood.

The Romans came to Farley Green - branching off Stone St. near Ockley, coming up Jolly's Hollow to build a small temple on the heath, then, via Thrus, going down Birmingham Lane & then either up Water Lane to Newlands Corner or along Cunedford Lane (once known as Bloodp Heales) & on to Cunedford.

3 OLD CHURCH

The old church in the Park was once the parish church - started in Saxon times, the main building is Norman - the tower is thirteenth - it had a spire which (just a nave & chancel, ^{are Saxon}) collapsed later & was replaced by the shingled cupola in 1400. The S. transept & aisle are 13C. as is the added chancel. This was roofless and needed off until recently, when it was re-opened by the Redoubt Church Fund - to my mind a pity - I preferred it as it was. The church had been closed by the Drummond in 1842 and a new church built for the parishioners in Weston St. It was designed by the architect of the Catholic Apostolic church, the Rev. Brookes - based on the ch. of Thaur in Normandy - supposed to have stone.

4 OLD PARK HOUSE

The manor house in the Park was for a short time owned by the Brang family, Lords of the Honor of Shere. In 1637 it was bought by Thom. Howard, later 6th Duke of Norfolk as a timber framed house, who got his friend Geo Evelyn to enlarge it, & then later to pull it down & build a new one. His brother, John Evelyn called in to design the gardens, didn't think much of ~~the~~ George as an architect: "George had a large mind but overbuilt everything!"

1684. Bought by Heneage Finch, later Earl of Aylesford, who largely rebuilt it after a fire in 1697; he sold it to his younger brother Capt. Wm. Cleveland Finch, not very popular man in the village - he objected to having villagers living so close to his mansion so harassed them so much that many moved to the village of Weston Street (but where I can't work out!). He got a magistrates order to close the road that ran from Sherbourne (the Silver Post) to the E. of Cakes Place & past the inn, The Hives, & also the road to Shere that ran to the South of his house. 1800 Sen. Thornton bought the house, had some additions made by John Soane - a new library & drawing room, a fine porch N. with four Doric columns, and a new staircase.

1811 Charles Hall continued driving the villagers out of the park. 1819 The house was bought by the banker, the Drummond, "The richest Commoner in England", who proceeded to buy up most of the land in the parish. He, it was, who built the New Road from Sherbourne up to Albury Heath, closing the old road through the park, Dog Kennel Lane, its extension South. Drummond's daughter married Lord Lovings, son of the Duke of Northumberland; upon her death in 1890 the estate passed to the Percy family.

had been built in red brick

② PARK HO. W.

In Charles Wall's fine new Gothic alterations shed been made by H. H. Hobbeswell, and in the 1850's A.W. Pugin was instructed to "improve" the house, which by then was ^{complete} ~~complete~~ the whole building, clothed it in ironstone with brick dressings, battlements, gables, and 63 chimneys, all different. Pugin describes it then as "one of the worst things Pugin did", but he was ill at the time & the practice had to be taken over by his 17 year old son, Edward.

6 PARK HO SF.

EVELYN GARDENS

In 1655 John Evelyn designed formal gardens out of the hillside opposite the house of 2 terraces at different levels, a half moon pond with a tunnel through the hillside (which still exists - I've been ~~down~~ through it), a vineyard below and a ~~large~~ canal made by widening the Tullaghbourne. Cabbett, writing in 1900 described it as "without exception the prettiest in England, that is to say, that I ever saw in England", even though by then it was considered old fashioned. The one problem they had was that there was no water at the right level for the pond & its fountain, except at Sherbourne - the silver pool. To bring the water down meant clearing the land of Mr. Rushbridge at Cookes Place, who was agreeable, but on his death his widow insisted that the agreement would only last for 11 years until her son came of age. The lease lapsed & was not renewed, though the water was needed, and from time to time the Rushbridges stopped the flow altogether, or took water from it, although the owners of the Park continued to clear out the watercourse. Lawrensis followed for years, until finally the last Rushbridge sold to Lord Aylesford, ~~the same time~~, in 1749.

9 COOKES PLACE

Nansel of the family who had lived in Albany for centuries. In 14c Christine Cook married John Rushbridge, who held the ^{freehold} house with the manor for a rent of "5 broad arrows with barbed heads, worth 4s, paid in cash". The house now consists of a central open hall, early 15c, with crown post roof, an added crown post parlour wing, late 15c of 3 bays, always floored, the front bay separated off from the rest. The right hand wing is later, with a clasped porch roof, always floored, including the attic. The decorative scheme is similar to those at Mallhouse Cottages Goswold & St. Tansley manor.

* CATH. AP. CH. 10. Fr. 11. Interior ? 12 Chapter Ho.

13 LITTLE GEORGE now Green Cottage.

No houses now remain in the Park except ~~those~~ Green Cottage was a two bay cottage with end smoke bay situated beside the old road from Sherbourne down to the old village. Its entrance is in the smoke bay, and in the ^{public} ~~public~~ wing was added to it, at right angles joined by the added chimney which was built partly in the smoke bay and partly outside in the gap between them. This wing may have been built by James Baylie, a victualler of 1663 as an inn with accommodation upstairs for travellers. In 18c it was known as the White Hart, then its name was changed to "The George". (It has always been known locally as the Little George.) In 1839 it was the house of the bailiff to Dr. Hammond, later divided into two houses, but recently converted back into one for the Estate Manager.



00597211

3)

~~WESTON HOUSE~~ CATHOLIC APOSTOLIC CHURCH

The beginning of the 19c was ^{known as the} ~~the~~ years of ferment - 1789 the French Revolution, the Napoleonic Wars, the enclosure in England and the Industrial Revolution. People saw signs and portents - these happenings & in 1826 Henry Drummond called a conference of ministers (including the Rector of Albury) to study prophetic scriptures and portents of the 2nd coming of Christ. He was associated with a presbyterian minister at Hotten Garden called Edward Irving (Lanc. Druggist). They believed that the 2nd coming was nigh, and so extreme were their views that both were excommunicated by their respective churches (Drummond was Church of England), and so they formed the Catholic Apostolic Church with Albury as its centre 12 Apostles (bishops) were appointed, of whom Drummond was one. and in 1840 he had "the Apostles Chapel" built in the park, designed by J.C. Ince & Brooks, probably influenced by Ruskin who designed the rose window, and built of local stone & ironstone, with timber from the park. † The last apostle died in 1901, and they weren't replaced, so the church as it was died out in this country, though the New Apostolic Church still flourishes abroad.

Think there were other churches in London

The Albury church closed in 1952, but it is still kept in good repair (in 1990 repairs costing £100,000 - a new roof, heating system & bells) ready for the 2nd coming. † Members of the congregation would stand up and testify if so moved, but when Mrs Jelling, a villager from Farley Green felt moved by the Holy Spirit she was told "Sit down, this is not for the likes of you".

WESTON HOUSE 1. Palladian House. 2. Weston House

Part of the manor of Gornchove was sold to William Weston in the time of Edward I c.1300. In 1520 it was sold to George Doncastre ^{whose} ~~his~~ ^{family} ~~built~~ a new house on the site in 1650, which was burnt down in 1720.

In 1723 Mr. Stuart bought the manor and built what is known as "the Palladian House" - a U-shaped house facing E-W of stone with handsome portico to garden front, the North wing was for the servants and the South wing contained study, drawing & dining rooms and a parlour. This was sold in 1820 to pay the Goddard families' debts & was bought by Henry Drummond, who pulled it down, because, if is none he could it bear to have such a grand house with a sight of his own! He built the present house in 1830 of stone & ironstone with a thatched roof, which caught fire in 1852.

Some one in the crowd watching the fire said "I wonder what fool had that house thatched?" A voice behind him answered "That fool won't make the same mistake again" - it was Henry Drummond, who had the house tiled, as well as all his other houses in Albury. Louisa Bramp, niece of Charles

~~1958~~ the Palladian who had been living there & wrote "A poultry house stands on the site (of the old)".

In 1958 the house was bought by Dr. Francis Burton, the well-known naturalist. He fell in love with the house after seeing what he thought was a woman beckoning to him from an upstairs window. "oblivious, rapt, with the white apron of a cook or house keeper".

Traces of an Elizabethan knot garden showed up in the lawn during the dismantling of 1976. That the house had been important is obvious by the fact that it had a pigeon house (now in West's field), for 600 pairs of birds. Only lords of the Manor or Abbots could have pigeon houses, and Elizabeth the first excommunicated their building, so that response could be made in this country from their spaw.

16 ALBURY HOUSE

A Central chimney house of 2^{1/2} storeys, ^{which} originally faced the road with the entrance in front of the chimney, which was extended by Anthony Davis, the architect in the late 18c by a wing at the back to house his pictures. He was known as the "Squaring man" because of his habit of carrying squarings, and "The Ipswich Yachman" because when out painting he would sit under a large white umbrella - the first seen in Albury! When Davis died the house was left to his niece, ^{Ellen} who ran a seminary for young ladies. It was written at the time that Ellen, called this was "a dignified and masterful lady, she was the mistress of a highly respectable seminary for young ladies of fashion. The seminary was also expensive, as is seen in the Farnham Diary records that "Miss Dearymple's expenses at Mrs Davis' school for last year (1793) amounted to £284". Miss Davis prospered, she assumed a coat of arms & had her name cut on her carriage panels. When she died, she in turn left it to her niece who was the mother of Master Tupper, who had the house from 1840. He added the porch and a wing on the road side. He was a well known writer, but fell on hard times ^{at the time} and had to mortgage the house to the Duke of Northumberland, who eventually re-purchased the house.

Tupper was involved in the rediscovery of the temple on Farley Green, and vehemently opposed the closing of the Old Church. He was described as "a tiresome little man, and a bit of a joke".

~~ALBURY~~

17 ALBURY MILL

There was known to be a mill on the Tillyghouse c. 1255, and until 1780 Albury House was the mill house until the two were separated and Davis bought the former. The new mill house of 1796 was burnt down in 1830 by ~~a~~ a man called Warner. This was the time of agricultural trouble & the excrement man hid in the shrubbery of Albury House & shot the miller as he looked out of his bedroom window. He then set fire to the mill. (Some accounts say that he set fire to the mill first, and then shot the miller, Frenker). In 1886 the Estate bought the new mill & sold it to Ellis Laboratories who had just bought Albury House, but the two were separated again in 1970.

18 OLD P.O. & DEANERY

I often wonder where the villagers went when they left Albury Park - Joseph says Weston Street (the present Albury), Brook, Little London & Farley Green, but it is not obvious which houses they built, or lived in. However, ^{it is} ^{pretty} clear that the three houses in the Terrace and the large one at the end were built by Henry Drummond ^{about 1840}. The large one used to be called "The Deanery" and was built for one of the officers of the Catholic Apostolic Church, the Terrace of three consisted of shops with accommodation over. One ^{is} called the Old Post Office, one Favre's ^{pharmacy} & the owner wanted to call the Old ^{Post Office} ~~pharmacy~~, he was told he was not allowed to call it that, so instead called it "Not the Old Pharmacy". ^{part of office} The Terrace consisted of 3 shops, with ^{the ground} falls away at the back allowing for a business there, with first floor and attic over. They are built of stone, church ironstone, like being at first floor level with ^{the ground} ~~the ground~~ level (probably from Regius Copybook). The W end one is jettied over an alleyway.

5) THE OLD RECTORY

The present building consists of a medieval open hall house at the back, a very fine parlour wing, jettied at the end, with a central chimney house adjoining and Victorian additions. People often wonder why the rectory was so far from the church in the park, and the answer may be that originally rectors were chaplains to the lords of the manor & lived in their houses; later rectors became more independent - the one at Athbury having to farm ~~himself~~ himself or be responsible for some 75 acres of glebe land in 16c. The old house at the back may be the original rectory, possibly moved: it is thought that there was once an open hall house on the site of the present chimney house to which the fine parlour wing was added - this wing has a steeply crown-poor roof, jettied back chimneys, is panelled downstairs with a well painting on the chimney breast. The original open hall house could have been moved back & built over cellar to provide a detached kitchen when the central chimney house was built - otherwise there seems no obvious connection between it and the front building until the whole was united later on.

A well known rector was William Oughtred, who came to Athbury in 1600. He was famous as a mathematician who invented the multiplication and proportion signs - he taught Sir Christopher Wren & William Howard, he was a friend of John Evelyn & of Wenceslaus Hollar the artist who did the painting of the Park House we saw earlier. It is said that he was more interested in mathematics than preaching!

c. 1798 Robert Halliday was (probably) another rector, he, the author of the "Essay on Population". This latter lived in Athbury, opposite the old Rectory. He was advised against going into the church as he had a hair clip & cleft palate & difficulty in speaking, but he said he only wanted a country curacy. He was also curate of Olney and then beyond Ewhurst, & riding over there he saw in the wood the poverty and excessive births (more than deaths) which made him think about population, & the struggle for existence and birth control. Darwin acknowledged his work - he used to stay at Harewood, on the Heath, study the earth worms round the temple end afterwards sit in the garden & watch the trains go by!

24 Canon George Portel, a nephew of Henry Drummond, was rector in 1858 - he was a friend of Lewis Carroll who used to walk over from Cowdrey to visit him. He it was who built the extension on to the rectory as he had 16 children, and wanted somewhere to work in peace & quiet!

In 1920's a new rectory was built, near the new church, & the old one was sold to the Estate for the use of Lord & Lady Eustace Percy. The house was divided in 2 in 1953.

22 OLD RECTORY BARN

You wouldn't give this barn a second glance passing on the road, but in fact it is a medieval stone or timber barn, for the rector to store his farm produce. It is of 5 bays, timber framed, now weatherboarded, with long gable end. The roof is new after a fire 20 years ago, but originally it was hipped and 2 gable ends (the west gable and the barns remain as I could see this). The N. bay was always floored, the South Bay had a floor added over a stable (or cowhouse) & above it lived the coachman & later the chamberlain. There was only one pair of large doors - to the East.

* 20.31 Last autumn I was walking up to the William & the library son, which used to stop there when I saw what appeared to be a burglar in his striped jersey hanging by the neck outside. Further investigation showed that it was, in fact, a French man, quite complete with bicycle and string of onions, who was awaiting in the back of a motor van. On making enquiries I was told that at the time when the man was expecting its delivery of the new Braun-Johns the French lorry drivers were on strike so to show their sympathy some one hung up this figure, much to the amusement of the locals who requested it again last year.

6) BETTWSY COTTAGE & HUNTERS MANOR Lot 16

C
23

The first thing that strikes you about this house is its absence of chimneys - more an open hall house used to look. This is a 4 bay open hall house with two bays at the ~~end~~ end jettied towards its farm yard. The other end bay now been completely bricked. Three chimneys have been added at the back - the larger central one probably ~~replaced~~ being for the inglenook added when the bay was floored over.

24) NIGHT & BROWNE'S YARD

A late 19C barn type building probably replaces the barn belonging to Bettwsy Cottage. It is interesting because until recently it was a business yard of uses, told how each part was used. It is weatherboarded on an ironstone base, with a half hipped roof and floor of chestnut, and large doors to the East. It was divided up into a carpenter's shop, office, nail store, paint shop and coffin store. Outside was a disrepair shed & a lean-to for the handcart. Adjacent, an older than the barn was a long low shed ^{and timber waste} ~~divided in 2~~ for with a work bench and saw pit, which could be floored over, and outside ^{were} covered ladder racks. The whole complex has now been converted into a (very expensive) house!

25) H. COTTAGE & CREG. NY-BAA

Once one house this is an early chimney house of four bays, with an added chimney at the W. end, perhaps when it was divided in 2. It may have been a small fair house of four bays, always floored, with a floored alcove. Fine ironstone chimney with room for a bacon loft and a small outshot at the back that may once have been a beer-to, for there is a blocked window on that side. The second bay has four centred door heads in the partition as though it a cross passage - the door to CREG. NY-BAA could have been the original entrance, that half of the house its service end

27) ROSE & SAUNDERS COTTAGES

When the owner of Rose Cottage told me that he thought his house had been a barn I wondered, when I saw the house & the hanging windows. However, it turned out that he was right - the house had been built over and around a three bay, 1/2 hipped barn with open cattle shelter or shed at the end. The original roof remained in places, the new, the original bay points were inside the new brick walls. A central chimney was added with bread ovens (hardly used) to serve both houses. It may have been a bay barn for L. HANS COTTAGE next door, for it had only one set of doors, the bay points had joists and the queen posts were missing. An unusual feature was the way a longitudinal spine beam had been built upwards, & from this sloping ceiling joists ran up to the purlins, so that each bedroom had a "pitched" roof for its ceiling!

28) LOWER NORTHFIELD

Cicilia Maxwell's mother was Lady Topsy Percy, daughter of the 5th Duke of Northumberland who owned much of Albany, the surrounding land. When Cicilia was 16 she was seriously ill and spent many months in Lower Northfield recuperating. Lady Topsy was a Quaker, as the Percys were Catholic. Apostolic it was not easy to find another husband. So some visited friends & relations in Albany & tried to drive a nail up along the back drive.

29) WILLIAM IV To end on a less serious note we will go over the wall & down to the agricultural or industrial building, though it be late 18C. A 1st floor was added with a small hall, cupboard, and later an outside chimney and a 19C brick wing at 2.

1. MAP Albury parish = long, thin, from Sun Valley, over Newlands Corner
 - chalk, down to fertile Tillingbourne valley, up to greensand heathland of Winterfold.
 4 Tfavors = E - Albury, W = Weston Gunshelve,
 S - Shalford Bredstone & Shalford Clifford. 3 hamlets - Brook, Little London & Farley Green. Concentrate on Albury & people who lived there

2. WESTON WOOD, Sandy ridge, E-W between Tillingbourne & N. Downs.
Bronze Age settlement on shelf in hillside, excavated by Joan Harding
 - archaeologist. Small place - 1 hut, 2 hearths, & 2 small fields
 - all gone - excavated for road. Large stones, standing & fallen
 - ~~geologists say local stone, N. side of hill~~
Romans - Farley Green - Stone St. nr. Ockley - up Jelly's Hollow
 - small temple, down Birmingham Lane, enter up Water Lane - N. corner
 or along Quidford Lane (Bloody Heapes)

3. OLD CHURCH, Once parish church. Saxon start, main build & Norman
 - Norman tower had spire (collapsed), replaced by 19c shingled cupola.
 S. transept (later decorated by Pugin), aisle & added chancel = 13c. Latter
 roofless until recently re-roofed & re-opened by Redundant Churches Fund.
Closed by Drummond in 1842 - new church in Weston Street x McIntosh
Brooks (also Catholic Apostolic Church). Red brick, not stone, based on
 church at Thaon in Normandy.

4. OLD PARK HOUSE, Manor house once Bray's. 1637 bought by Thos Howard
6th Duke Norfolk - timber framed, enlarged by George Evelyn, friend, who later
 pulled it down & replaced. John Evelyn, brother - 'no good as architect' -
 "George had large mind, but overbuilt everything. John = gardens."
1684 bought by Henrietta Finch ^{Earl of Aylesford} - rebuilt after 1697 fire. Sold to brother, Capt.
William Clement Finch - unpopular - harassed villagers - moved to Weston Street,
Hepstrater order to close road from Silver Pool, E. Cookes Place, past George Inn
 to park, also Shere road, S. of house.
1880 Samuel Thornlon - additions x Spene - library, drawing room, classical
 wing facing N. 1811 Charles Wall - continued harassment.
1819 Henry Drummond, banker, "Richest commoner in England", large purchases.
 Built New Road - Shesbourne - Albury Heath, closed old road & Dog Kennel Lane.
Daughter married Lord Lovaine - son Duke Northumberland. on her death, 1890
Percy gained estate.

5. PARK HOUSE W. Charles Wall - none Gothic alterations x Henry Hakewell.
1850's A.W. Pugin "improved" house - then a complete jumble - Gothicized it.
Ironstone, brick dressings, battlements, gables, 63 chimneys. Percy "Some of the
 worst things Pugin did". Ill, practice taken over by 17 yr. old Edward.

6. PARK HOUSE S.E. Part earlier house. ? Remains Spene block.

7. EVELYN GARDENS 1665 John Evelyn - formal gardens from hillside.
 2 terraces, different levels, 1/2 moon pond, tunnel, vineyard, canal.
Cobbett, 19c. "without exception the prettiest (garden) in England, that is to say,
 that I ever saw in England" - old fashioned by then.

8. TERRACE & POND Problem = no water for pond & fountains, Shesbourne -
 Across Risbridge's land (Cookes Place). Widow = 11 yrs. only till son's coming of age
 lease ran out. Risbridge's stopped flow & took water, Howl Park owner cleared.
 Lawsuits - last Risbridge's sold out - Henrietta Finch 1749

9. COOKES PLACE Local family. 14C. Christine Cook married Jn. Risbridge ②
 - freehold of house within manor - rent "5 broad arrows with barbed heads, worth 1/8, paid in cash". Central open hall + early 15c. crown post, late 15c. added crown post parlour wing, floored, front bay separate. Later R.H. wing, railed porch roof, always floored. Attic. Gets like Yaffhouse Colts. + Ab. Tenley manor
10. LITTLE GEORGE Grange Cottage. 1 of 3 remaining N. of Tillingbourne.
 2 bay cottage + end smoke bay, beside old road. Entrance in smoke bay.
 17C. wing @ rt. angle, joined by added chimney - partly in smoke bay - in gap for wing. ? Built by James Bayley, victualler 1663 as inn + accommodation.
 18C = "White Hart", later the George (locally Little George). 1839 = Drummond's barbiff's house, later 2 houses, now Estate Tenepers.

11. CATHOLIC APOSTOLIC CHURCH 19C. "Years of Ferment" French Revolution, Napoleonic Wars, English Enclosures. Industrial Revolution. "Signs + portents"
 1826 Henry Drummond - conference of ministers (inc. Albury) to study prophetic scriptures + portents of 2nd Coming. Hatton Garden presbyterian minister Ed. Irving.
 2nd Coming = nigh. Extreme views caused excommunication (Drummond = Coy E).
 Formed Cath. Ap. Church. Albury = centre, other churches in London. 12 Apostles (Drummond one). 1840 Apostles Chapel built x Thos. Intest Brooks, Pugin influence

12. INTERIOR Pugin = E. window. Local stone + ironstone, wood from Park.
13. CHAPTER HO. Members testified. Mrs. Jolley, Farley Green, ~~the~~ villager, ~~was~~ moved by spirit stood up, told "Sit down, this is not for the likes of you".
 1901 last Apostle died, not replaced, no succession, ∴ church died out in this country. New Apostolic Church flourishes abroad. 1952 church closed, kept in repair for 2nd coming. 1990 £100,000 repairs - new roof, heating + lights.

14. WESTON HOUSE ^{Paladian} c. 1300 pt. manor ~~Weston~~ Gumshave sold to Wm. Weston.
 1520 sold to George Duncombe, whose family built new house 1650, burnt 1720.
 1723 Mr. Sturt bought built "Paladian house". U-shaped, facing E-W. stone
 with ^{Italian style} hardwood portico to garden front - N. wing = servants, S. wing = study, draws room, dining room boudoir. E front by Jn. Hassell. 1823. (Garden).
 1820 sold to peary Goodschell family to debts, bought x Drummond - demolished. Couldn't bear site of grand house so near his own! Staircase - 158 steps.

15. WESTON HOUSE ENTRANCE 1830 built present house - stone, ironstone, etc.
 1852 Burnt. "I wonder what fool had that thatched?" "That fool won't make the same mistake again" - Drummond. All Albury houses tiled. Louisa Bray, Charles Hellhus niece "A paltry house stands on the site" (of the old).
 1958 Dr. Maurice Burton, naturalist, bought - Beckoning women "short, buxom, with the white apron of a cook or housekeeper"
 1976 Drought - Elizabethan knot garden. Important house - pigeon house (now in Weston Yard), for 600 pairs birds. Only Lords of Manors + Abbots could have pigeon houses. Elizabeth I encouraged building for gunpowder from their swans - previous only made abroad - knowledge imported.

16. ALBURY HOUSE Central chimney house, 2½ storeys, faced road, entrance in front of chimney. 18C. back wing by Anthony Devis for pictures. "Gingerbread man" "Hen mushroom". House left to niece Ellen, had Seminary. Called "Mrs." Expensive Farrington diary "This Dalrymple's expenses at Mrs. Devis' school for last year (1793) amounted to £284." Ellen prospered, acquired coat of arms, had seal cut + her carriage painted. House left to her niece, Martin Topper's mother - 1840 he had house - added porch + wing. Well known writer, fell on hard times, mortgaged house to Duke who eventually ~~took~~ re-possessed. Topper involved in Farley Green temple vehemently opposed closing old church. "A tiresome little man, a bit of a joke."

17. ALBURY MILL 1255 a mill known. Till 1780 House & mill were one, till Davis bought house. 1796 new mill house built. 1830 burnt down by Warner. Aggrieved labourer set fire to mill & shot miller, Franks at bedroom window, from shrubbery. Or vice versa. Last person to be hanged for arson in spite of Drummond's pleading. 1886 Estate bought, sold to Ellis laboratories who united house & mill. 1970 separated again.

18. DEANERY + OLD POST OFFICE Where did dispossessed people go?
c. 1840 Drummond built "Deanery" row of 3 shops with flats over. "Deanery" for office of Catholic Apostolic church. Terrace of 3 = "Old Post Office", "Farrier's Cottage", "The Old Pharmacy". Ground floor shops - ground falls at back allowing basement, first floor & attic. Stone, ironstone, clunch, till hmg @ 1st floor. Pugin (copybook) chimneys, West end jettied.

19. OLD RECTORY Mediaeval open hall house at back, jettied parlour wing with side chimneys, central chimney house & Victorian addition. Why so far from church? Originally rectors were live-in chaplains & manor houses. Later became more independent. 16c. 75 acres glebe land to farm or be farmed. Perhaps old house at back was original rectory, possibly moved - odd position. ? Originally open hall house

20. While central chimney house is - parlour wing added - steepy crown roof, jetty, side chimneys, garde robe, fine panelling, wall painting on chimney breast. Perhaps old house moved back over new cellars as kitchen. New c.c. house 1610 William Oughtred = rector. Famous mathematician. Multiplication & proportion rules. Taught Wren & William Howard (Duke Norfolk), friend John Evelyn & Wenceslaus Hollar who did painting of Park House. More interested in maths than preaching!

End 18c. Robert Malthus = possible rector. Author "Essay on Population". Father lived opposite rectory. Harelip, cleft palate, advised against church. "Only wanted country curacy". Curate of Okewood thir, nr. Ewhurst - saw poverty in Wexham as he rode over - more births than deaths. Thought about population, birth control, struggle for existence. Darwin acknowledged his work - he used to stay at Haredean, study Temple earth worms & water trains.

21. 1858. Canon George Portal, Drummond's nephew. Friend Lewis Carroll. Builder Victorian extension for quiet - 16 children.

1920 New rectory built. Old one sold to Estate for Percy. 1953 divided in 2.

22. OLD RECTORY BARN Mediaeval glebe or tithe barn. 5 bays, now weatherboarded - perhaps originally wattled. Timber framed, long passing braces. Fire 20 years ago. Hipped, 2 Queen posts, wall plates & tie beams remain. North bay always floored, South bay added floor, over stable for coachman/chauffeur. One pair doors only - East.

23. BETTWSY COTTAGE. HUNTERS MOON Late 16c. 4 bay open hall 2 bays @ solar end, floored, jettied to yard. Other end bricked. Three chimneys added at back. Hipped. Farm house.

24. KNIGHT + BROWNES YARD Late 19c barn type, ? replacing barn. Low part may be original. Weatherboarded on ironstone base, $\frac{1}{2}$ hipped roof, clunch floor, large doors to East only. Builders' - carpenters shop, office and nail store, paint shop, coffin store. Distemper shed, lean-to for hand cart. Low building - Timber store, work bench, saw pit (could be floored). Covered ladder racks. Now expensive house.

25. LEFT HAND COTTAGE + CREG NY BAA Early chimney house - 4 bays. Added chimney - West end. Small farm house, always floored, with attic. Ironstone external chimney with room for bows loft. Outlook at back = originally lean-to - covered window. 4 centred door heads in partition? for cross passage - door to Creg ny Baa correct. Latter probably service end - not seen.

27. ROSE SAUNDERS COTTAGES

Converted barn. 3 bay barn @
 1/2 lapped with possible cat-hole open cattle shelter at East end.
 Bay posts & original roof remain inside. Brick walls, tile hangers, tiled roof.
 Added central chimney + 2 bread ovens for 2 houses. One set doors,
 joint posts, raising oven posts. Longitudinal spine beam, sloping
 ceilings off it. ? Barn for L.H. Cottages nearby.

28. LOWER NORTHFIELD

Gavin Maxwell's ("Rings of Brierley Water") mother
 = Lady Mary Percy, daughter of Duke Northumberland. At 16 Gavin very
 ill, recuperated here. His father killed 1914, 3 months after Gavin's birth.
~~She remained widow - Catholic Apostolic~~ - Gavin visited friends in the
 village. Learnt to drive up & down Park drive.

29. WILLIAM IV

Little London. Originally 2 bay timber framed
 agricultural or industrial building - no upper floor, though late 15c.
 1st floor added with smoke hood + outshot, later outside chimney &
 19c. brick wing. Once "Garibaldi". End 19c. "William IV".

30. Last autumn - library van. ? burglar - striped jersey - hangers.

31. French Onion Seller - kerer, bicycle, string onions. ~~year~~ 1996
 Beaujolais Fine lorry drivers on strike. Loads requested again
 last year.

[i.e. 1997]

[∴ TALK = 1998]

Hist. Soc. photos

2. Weston Wood from church
3. Old Church L.2 July 90?
4. Old Park Ho. Hallar. L.6
5. Park Ho. W. L.14. (10)
6. Park Ho. S.E. 17. 4/90
7. Evelyn Gardens. 19/3/96. 17
8. " " Terrace + Pond. 4/90?
10. Little Georges 2599 II/24
11. Catt. Ap. Ch. HD 24.7. Charities 10
12. " - Interior AP40.75. 11/85. W37
13. " - Chap. Ho. WBS11
14. Weston Ho. J. Haswell AP9 10/89
15. " - Entrance 264^b II/33
16. Albury Ho. 59.

17. Hall Ho. + Labo. 47 11/85
18. Deanery. Old P.O. 5. AP25
21. Old Rectory. Skelloms 85. II C26
24. Knight. Brown's Yard. 302^b II/33
25. L.H. Cottage 305^b II/140
28. Lower Northfield 306^b II/143
29. William IV. 69. I/86

ALBURY.

Long parish - Sun Valley, Newlands Corner - chalk, fertile Tillingbourne valley, greenland/heathland of Farley Green & Winterfold, ~~near~~.

4 Tanors: Albury, Weston, (pt. Stone). Shelford Bradstone & Shelford --- ^{Clifford} (Baker R.G.)
Gomphalve.

? Stone Age. ~~Iron Age (Roman)~~. 4000 B.C.

Bronze Age Settlement Weston Woods, now gone. excavated by J.H. in 1911-15
Domesday 1086 - Blackheath Hundred. Elderserie (the old Bury, i.e. Roman) or Bronze Age

Romans: Stone str. divided at Rowhook, branch to Farley Heath (Temp)
+ on to (S) Mechester. ^{Julian's Hollow} Blackheath Lane - water lane - N. corner. + Gifford Lane Bloody Hedge

House 15C. Bray family. 1637 Thos. Howard, Earl Arundel, friend J. Evelyn

Geo Evelyn archt for enlargt house. Jn. Evelyn did gardens.

Hereshe Finch, later Earl Aylesford bought 1684.

Clement Finch bought 1780

1800 Sam Thornton bought. Widened & made road there/N. corner

1811 Ch. Wall

1819. H. Drummond

1860 Lady Lovani (1845 n. Lord Lovani, later 6th Duke (w. father?) worked hard away by J.B. water

1890 Percy family

1645 Tudor timber framed dra. x Hollar c. 1500. (RHS. ? x G. Evelyn ?) Porel-cop pass. Additions high end

1648-76 Much pulled down, new designed x G. Evelyn.

1697 largely rebuilt after fire for H. Finch.

1800 Soane added main staircase & new library now drawing room.

1815 Gothic alterations x Hy. Harewell for C. Wall.

c. 1850 Pugin - ironstone, brick dressings, battlements, pinnacles, 63 diff. chimneys. d. 1852 age 40, ill 1847 completed by son Edward

Gardens: 2 // terraces, pond, tunnel. Canal from Tillingbourne

1822 Cobbett "without exception the prettiest in England, there is to say that I ever saw in England". Then old-fashioned.

Roads: S. of house to Dark Lane Cottage by Stone ford.
Road from Silver pool past Cookes Place & Little George to Top Kennel Lane
Drummond built new road.

1784 Captn. Finch ^{patron} closed Stone road

1785 " " N.S. road. started heranic villagers who moved to W. Street

Drummond partner in Drummonds, Bank.

1826 people met in park to study scriptures concern 2nd Comings.

1832-5 Twelve apostles, i.e. Drummond called. D. left Cop E

1840. Church tower, "apostles chapel", later cathedral. x Hact tosh Brooks and Puci 1847

1847 Old Ch. closed & new built in brick "in imitation of the cl. or Thon in Normandy. H.I. Brooks. Last apostle died 1901.

Old Ch. Saxon work have. Norman tower. 17C opprt added, replace x cupola. 13C. chancel 14C.

Rob. Thellius
Doris in studied earthworms rd. Temple
Rin's water narrow oblong
washed hard away by water
Porel-cop pass. Additions high end
Soane's work (load N. & completed) Ionic pilasters

1974 Redoubt churches
Drummonds 1839 - 1974 Redoubt churches
Pugin's mark in chapel for Drummonds 1839 - 1974 Redoubt churches

Own photos

(19)

ATHS photos

(16) 15

Wanted 2

- ~~Found House~~
- 26 L.H. Cottage
- ~~Old church~~ 1 2
- 9 Cooks Place 2
- 19-20 Old Rectory (2) 2.1 (1)
- 23 Beltway
- Alb. House
- 27 Sanders & Rose
- 22 O.R. Barn
- 1 My map
- ~~K+B's Yard~~
- 30 31 Onion Seller

- 6 Park Ho. SE
- 4 Old Park Ho
- 3 Old Ch. S.
- 5 Park Ho. Front ~~Garden~~
- 11 ~~Rect. A.Ch. Front. Interior~~
- ~~W Lodge Ffetched~~
- ~~Old village~~
- 13 C.A.C. Chap. Ho.
- 18 ~~Rect. V.~~
- 14 Weston Ho. Palladian
- ~~Beltway~~
- ~~18 ~~Rectory~~~~
- 17 Mill (old Mill)
- ~~W. Ho. E~~
- 16 Albany Ho. ~~4 deck~~

- 7.8 Evelyn gardens 4
 - 2 Weston wood 2
 - 28 howiv Northfield
 - 25 L+I and Evelyn 2
 - 10 Little George
 - 15 Weston Ho. W
 - 29 William IV 2
 - 24 K+B's Yard
- Map
- Old Rectory
 - Rectory
 - Portal Ft. Soc.

(11)

Lower Northfield

Garin M. 16 - Henoch's purpura - internal bleeding - nearly died in Weybridge (from stone)
 1930. Spent xmas at Cooks Place with mother
 Learn to drive in Park drive (pp. 24-25-26)

Lady Mary Percy dau. Sir Duke
 - Cath. Apoc. widow, father killed in 1914

Late Bronze Age ~~1000-800 BC~~ c. 500 BC Homesite. Short occupation
 W. Wood - greenland. spring-water. Tuff - fish. clay - pots
 House. Cultured plots. Flint tools. Pots. Quern outside hearth.

Yard not early could be 18 C., result of quarrying or gardening.
 Stones. could occur naturally in ground N. of W. Wood.

Ms B. 3 standing stones, 2 over. one 10' long x 5' 8"
 Geological Survey Memoir - Dines & Edmonds. quoted Viscountess Herworth
 Grace Cott.

Little George 2 bay mid 16 C. end smoke bay. 1/2 hipped roof 63
 clasped purlins, entrance in smoke bay. Large end chimney in smoke bay
 projecting out into eaded wing or vt. angles (2 bays again), Iron stone galleled
 late 17 C. 1663 Nichollet = Jas. Baylie. 1708 publican/owner = Ed. Shephard
 1743 Jas. Hones. 1782 Rich. Jarlett.
 1748 = White Hart. 1790 The George.
 later divided in 2 - gardeners ho. & bathy. 1839 Bailiff's House.
 Now E. managers house.

Cooks Place J. Baker Central open hall 1470
 1470. R.H.S. Jacobean late 17 C. 3 bay
 - 3 bay always floored - ch. w. plates & ties.
 R.H.S. side purlins - floored - headroom for door in
 as Thelthorpe Gills & Cr. Tansley Manor.
 LHS parlor wip beyond service
 plain C. Bar - front bay separate
 attic. Close studding. Dec' ve gable

C. Apostolic Church.

By 1900 years of famine abroad (1789 Fr. Rev. Napoleon 3rd war). English enclosures from 1800. Industrial Revolution
high price corn. - incl. Alb? Teneil

1826 Drummond called conference of ministers, laymen to Park to study prophetic scriptures + portents of 2nd coming.

1822 Presbyterian minister Ed. Irving minister Calden - Chapel Hatten Garden. Was associated with Albury.

1830 Excommunicated.

1835 12 believers called apostles appointed, with Albury as centre.

Drummond 2nd. He left C of E.

Apostles as in N.T. Prophets - spoke on impulse. Evangelists. Pastors

Each cl. had chief pastor (angel)

1834 - 7 cl's in London

Apostles divided Christ into 12 (tribes) D's being Benjamin (Scot^d), Prot^d Swit^d)

travelling for 3 years learning in their territories

1853 Gordon St. Ch.

1840. D. built ch. "Apostles Chapel". Arch. McIntosh Brooks. £20,000
Pugin influence

Canada, N.Y. Australia. N.Z., S. Africa Europe.

When apostles died they weren't replaced - 1855 - 1901, no no ordination could take place. Last coadjutor in Albury Ed. Healt d. 1929

Closed? 1950, 1954

New Apostolic Ch. in Germany, S. Africa, America Canada, India Pakistan, Korea, Africa, C. America.

Arch. M. Brooks (after W. Wilkins incl a Nat. Cell?). Entwurst stone
Timber from Park. Pinnacles rebuilt Batt stone
Dromon

Bruce Jn. Browne. 1896 3 vestries added Shelford builders.

Rose window - Pugin. Clock from streets of Park. Open Holmset
water powered - 1965 - electric.

Pews, chancel stalls, tabernacle, lamp stands - A. Browne.

1990 Repairs £100,000 - new roof, heating system, lights
(? last repair 1971) - Paddock
Albury 1952

Build on site of small farm - mainly vicarage
bungalow older than ch. (beside old road).

Nave, no aisles, gl chapter house. Vestries added. Tower, open timber roof
stained glass in transept windows x Drummond's daughter Lady Rokewood Gate

Risbridgers Cooks in Albury for many cl's. (13th). 14C. Christ Cook m. Jn. Risbridger
Freehold land within manor - with "5 broad arrows with barbed heads, with 1/8, poudicant

1655 Evelyn designed 2 terraces, 1/2 moon pond + vineyard below terraces. Tillingbourne
widened as canal. Water needed for pond, vineyard. Owned Silver Pool but led to
cross Risbridger land.

1661 widow Joan agreed to lease Henry Howard strip of land for 11 yrs. till son of age -
lease elapsed, not renewed. 1673 Ri. said no title to strip + interrupted water
Howard pd. Incl repaired + R. took water, till he died. Widow cut off water
Incl used. Won. Sherborne water course - water could be taken by R. 1745
1748. R. sold to L.A.

Weston House

W. Pr. manor Grimshawe sold to Wm. Weston the Ed I 1272-1307

1331 Another had houses in A. Clendon, Str.

(1422 Anne Weston m. Tho. Stifelde)

1520 sold to Geo Doncombe. Built ho 1650, burnt 1720

1723 Shurt bought Manor, manor's ho, Estate (Wolsham present 1800 house)

"Palace house" prob. built 1723-27.

1729 Rob. Godscall bought

1752 Sarah G. m. W. Tfan who added G. to his name. d. 1798

Rew. Sam. M. G. sold to Drummond.

(Rob. Clive o. Healthus residents) ^{Aunt} Charles Healthus died at W. Ho in 1821

Louisa - Charlotte Bray. 1860. In June Uncle G. d. W. Ho. sold to pay

his debts & was pulled down. W. Ho. built of stone in the Ital^e style

... handsome parties in C. garden front. N. wing = servants. S.

includes study, draw^s, din^g rooms, aunts parlour. Staircase removed

to County Club, 158 Hill St. (not G. Ho.). A poultry ho stands on the site

of W. ^{Hansell 1823. IIII+}

1820's present ho. (29 rooms!) 1830. Burnt 1852

1958 M.B. bought from Estate about "house keeper type"

Tudor garden 1976 draught. Brass.

Flir 1666 Tudor mansion (bricks)

Pepin Ho. two "pepin holes" 1550. Eliz¹ encouraged Lords manor to build

pepin ho's for gunns for gunpowder after she imported a German to lease

Explicit how to make it. Only Lord of M. ~~Could~~ or Abbott could have p. ho.

lots of W. names - ho. yard - beer. farm. (? rare imported than Albury?)

"short, buxom, with the wk. apron of a cook or housekeeper"

"I wonder what fool had this ho. Thatched: "That fool won't make the one

minute again" Village de-thatched?

Govin visited 1960

Jaeshites planted Scots pine in garden to indicate sympathies. Died W. Ho. Lowe

e Charlie Tree (W. Country)

Ice Ho. (Gene Larder)

1910 Pe. Ho. complete 8' 1550. 19' high. 24' across. tiled conical roof

E. boarding 24 bricks - most stone + sand

Albury House

- Extended late 18c x A. Devis ^{n front} - large room @ back for pictures
"gingerbread man" Then mushroom
- 1840 Martha Tupper
1255 Ho. on site
- 1780 House. mill separated, sold to A.D.
- 1816 D's niece Ellen led "seminary for young ladies of fashion"
- 1820 House left to ^{her} niece Ellen, mother of Martha Tupper
- 1840 Martha came
- 1852 Tupper added wing. Horseshoe ho. to estate.
- 1887 Duke purchased house.
- 1959 Ellis bought house

mid 16c. Collier ownership
1/2 brother Arthur Devis was portrait painter
Ellis, called Mrs "A ~~masterful~~ dignified, masterful lady, she was the mistress of
a highly respected sem^r for 49 ladies of fashion. The seminary was also
expensive as an item in the Farrington diary records that Miss Dalrymple's
expenses as Mrs. Devis' school for last year (1793) amounted to £284.
Mrs. Devis prospered, she assumed a coat of arms & had her seal cut
and carriage painted".

Hill:

- 1255 mill on site
1796 mill house
1830 Hill burnt by warner - hanged, having shot at Franky the miller,
Tender of Cooke, owner
- 1831
- 1886 Hill sold to Estate Mealman
- 1950 Ellis bought mill Separated in 1970
1782. Son Lawrence firemark 9/- Wm. Ryde @ Albury. Surrey for his water
Corn mill only at A. aforesaid. Brick timber & tiles not under £300
- 1780 Hannah made over mill to son who sold it to Wm. Ryde
(A.H. let to Mr. Small piece in whose scrubby Jas. Warner had after he had
set fire to the mill. It was from there that he fired a shot at Mr. Franks
as he looked out of his bedroom window in the mill house
& employee rebuked for cruelty to horse?)
- Mathus lived "The College"
Darwin stayed at Haversden & liked to watch the train go by.
One source says shot first, then fired mill. Drunk. Asst. in rest,
rick firing common

70's - 80's days of prosperity over.

Upper let house

"Surrey (in the delightful neighbourhood of Gifford. Parking within 1/2 m. of station on the S.E.R. A charming family residence, stand up on a dry high road, screened from the N. wind by a well wooded hill in the rear. Drive approached by a carriage drive, entered thro' a grassy park with encrustic tiles & contains 8 principal & second? bedr., 4 servants rooms & 3 dress'g rms. drawing rm. 30'6" x 18'6" & 16' high with casement opens on to lawn, extensive dining rm., breakfast rm. with library of books, house keeper's rm., & good domestic offices. Stabling for 5 horses, coal ho., man's rm., cow house & low rate out buildings. There is an ornamental timbered lawn, pleasure grounds, shady walks, green ho. with abundance of grapes, walled k. garden well stocked with fruit and meadow land, in all abt. 9 acres. Hunt? with the Surrey Union. The residence is v. comfort? furnished, & rooms are hung with valuable paintings. Rent 350 gns. per annum or 14 gns/week in the summer months."

Involved in red brick cov? of Temple. & opposed clearance of Old Cl.

"a tiresome little man, a bit of a joke."

Ho. divided into 3.

Old Rectory Barn

5 bay med? barn, timber framed, now weatherboarded, new roof after fire. Glebe barn - for kitches or crops from glebe land (15 acres) Jowl posts. Lost pannier braces. Probably wattle, not rec? date. Boarded inter? to mid rail. Sill on ironstone plinth. New roof 20 years ago - orig? hipped 2 gables. Doors to E side only. N1 bay floored. NE corner (new floor) chauffeur's room. 5 bay now floored partly of - ? stable or cowhouse. Chauffeur lived above 70 years ago.

Old Rectory

Open hall - Kitchens. ? Brower li? Hedd. house at back, arch? braces, hipped with saddle. 18c. central chimney. S. side quite different re: purlins. Crown post. Cellars beneath. Jettied wing late 16c., moulded crown post, outside side chimneys, close studing. Well painting on chimney breast. 2 rooms, stairs between. Garden like Central chimney house 17c. may have replaced open hall - 3 bay. New 1/2 hipped, may one have been hipped cl. purlins.

Beltway Cottage. Hunters Floor

late 16c. Arch? braces. 3 back chimneys. open hall ho with jettied solar. 2 bay. - ? central replacing lipelooks of hall when floored over. ? end bay now a new brick. Jettied to farm yard. dia. pr. rafters.

High - Brown's yard

late 19c. barn type build? probably replaced earlier. Ironstone, weatherboarded benders & underlakers. 1/2 hipped - Timber shed earlier. Clince floor. Large doors to E. Divided up for carpenter's shop, office. paint shop, coffin store. E. side distemper shop. lean to for hand cart. Timber shed - in 2. work benches, saw pit (could be floored over). Timber store. Covered ladder across end side.

L.H. Cottage: Creg-my-Baa.

One house - early chimney house of 4 bays, added chimney with
Sq. frame. Sincers tenon brace. Owl shot at back
Ironstone chimney with room for beam loft. Present door beside chimney
but C.M.B. porch could have led into service bay or cross passage.
2 bays in north room 4 central doors leads in partitions. Jaws
Farm house. Creg-my-Baa - serviced. Attic storage
? Rose Cottage its barn?

Rose, Saunders.

3 bay barn with added bay. Added central chimney with broad over-
orig. $\frac{1}{2}$ hipped. New roof over top, gabled. Bay may have had external
roof over cattle shelter. Walls built round-brick, tile hung.
Bay posts, jaws, raking over struts. ? Hay barn - door to N. only.
converted by 1839. Upstairs spine walls divide bays in 2 - reflects
run up from there to purlins making 1 slope of ceiling, other slope = roof

Farmers, North O.P. + The Old P.O.

3 shops with 1/2 accout over
Crd. falls away, no extra floor at back. 2 + attic at front. Stone, chime
ironstone. c. 1840. Upper storey tile hung. W. end jettied over alley
Entire door leads 4-centred, mid with window. D.O.W. of North O.P. cere
for a Stretton, Harb., where Jane Austin's father was chaplain.
Shop + parlour on G.F. Best kitchen + 3 beds + attic. P.O. cottages
pulled dn. Built against School Ho.

Albery House

Central chimney, 2 1/2 storeys. Stair turret. Wing at back + front
orig. faced road - N. 2 ms led floor, entrance/dining bay. Stair turret
behind wing - stair bracket in? Stepped butt post. Wing at back? rebuild
of earlier service wing.

~~Little Cottage~~ William IV

2 bay timber framed, 1 1/2 storeys, jowled? late 15c. "Farm" building
converted with 1st floor + porch, smoke hood. Outside chimney 17c.
19c. brick wing Curved tie beam arch braces

Alan de Poiton, before 1285, granted 4 acres of land on which
he built a house. (Said to have been 13c. behind "present" rectory, latter
pulled down - no pic on maps.)? Building at back of old Rectory?

So far from ch? Rectors were often private chaplains & lived in big ho-
use. By early 17c. 75 acres glebe land with barn & house.
~~1670~~ - 1660 Wm. Dwyllard. 1610 came to Albury: Cf. mathematician, invented
1574 x and y signs. Tamper Wm. Howard, Chris Wren. More interested in
maths than preaching! Friend of Jn. Evelyn & Hercules Holker - artist
Elias Ashmole - neighbour - founder of A. Museum - Trig^l abbreviations

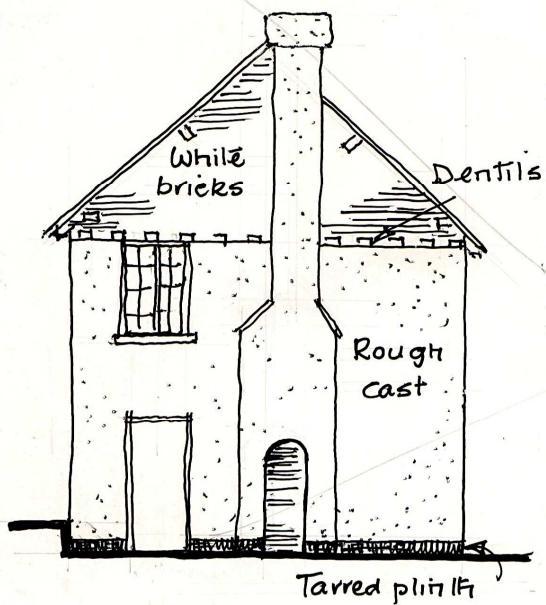
Rev. Hallius author "Essay on Population". Curate c. 1798

son of Daniel who lived in Albury. Only palate & horsehip, but only
wanted country curacy. Curate Okewood - riding there saw poverty
& excessive bills (more than debts) made him think about population
& struggle for existⁿce. Darwin acknowledged m's work - visited
Hereders & watched Francis! Bro. lived at "The Cottage"
Sister m. Sen. H. Godd of W. House.

Canon Geo. Portal ^{1858 Leeds} Nephew of Drummond. Visited x L. Carroll. Bowler exten^s
16 children! Founded Surrey (later National) Dialectal Ev. Soc -
"Cock & the Club" - monthly payments ~~exten^s~~

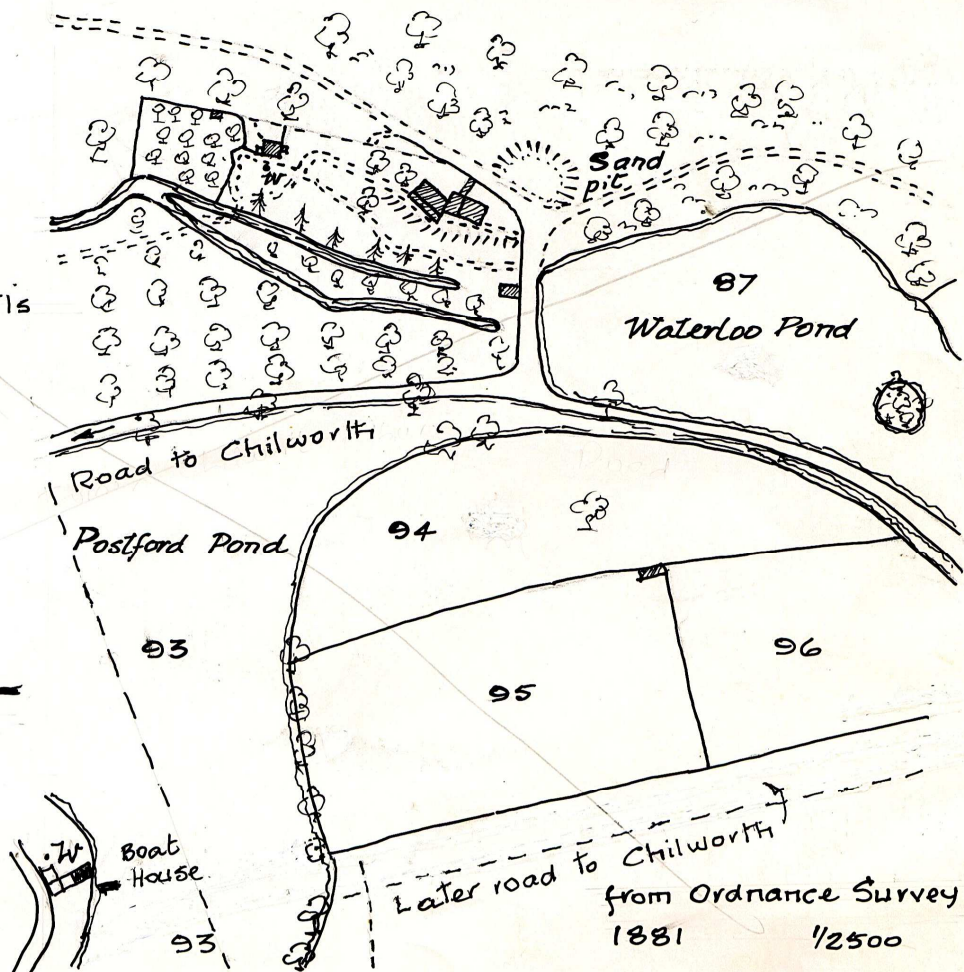
1921 New Rectory (Canon Rice) sold privately then to Estate - Lord & Lady
Eustace Percy
? Skene
Jovip war Watsons, the Fitzherberts - Catholics - mass in upstairs room
1933 house divided in 2

[ALBURY PARISH] MILLSTREAM COTTAGE CHILWORTH



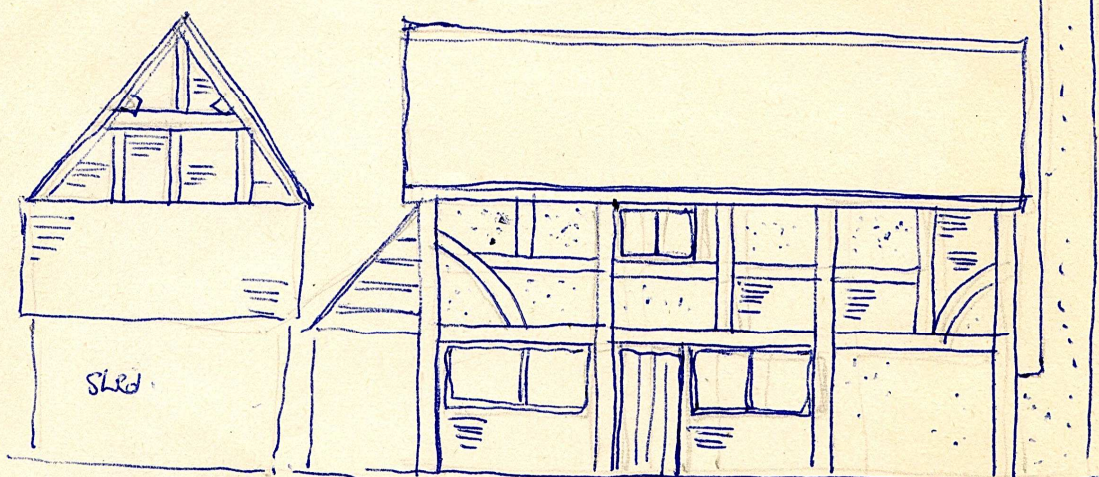
WEST END

Caroline M. Martin 3/98



THE HOME. BLACKHEATH LANE

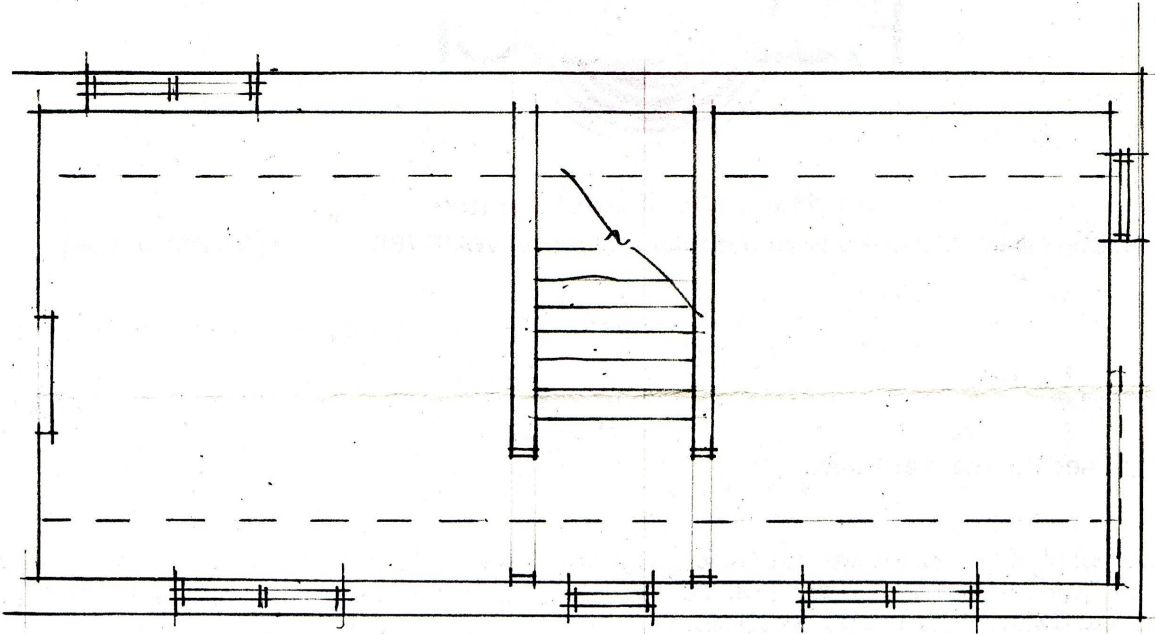
? 2 bay work room - service of E end. External chimney



E.

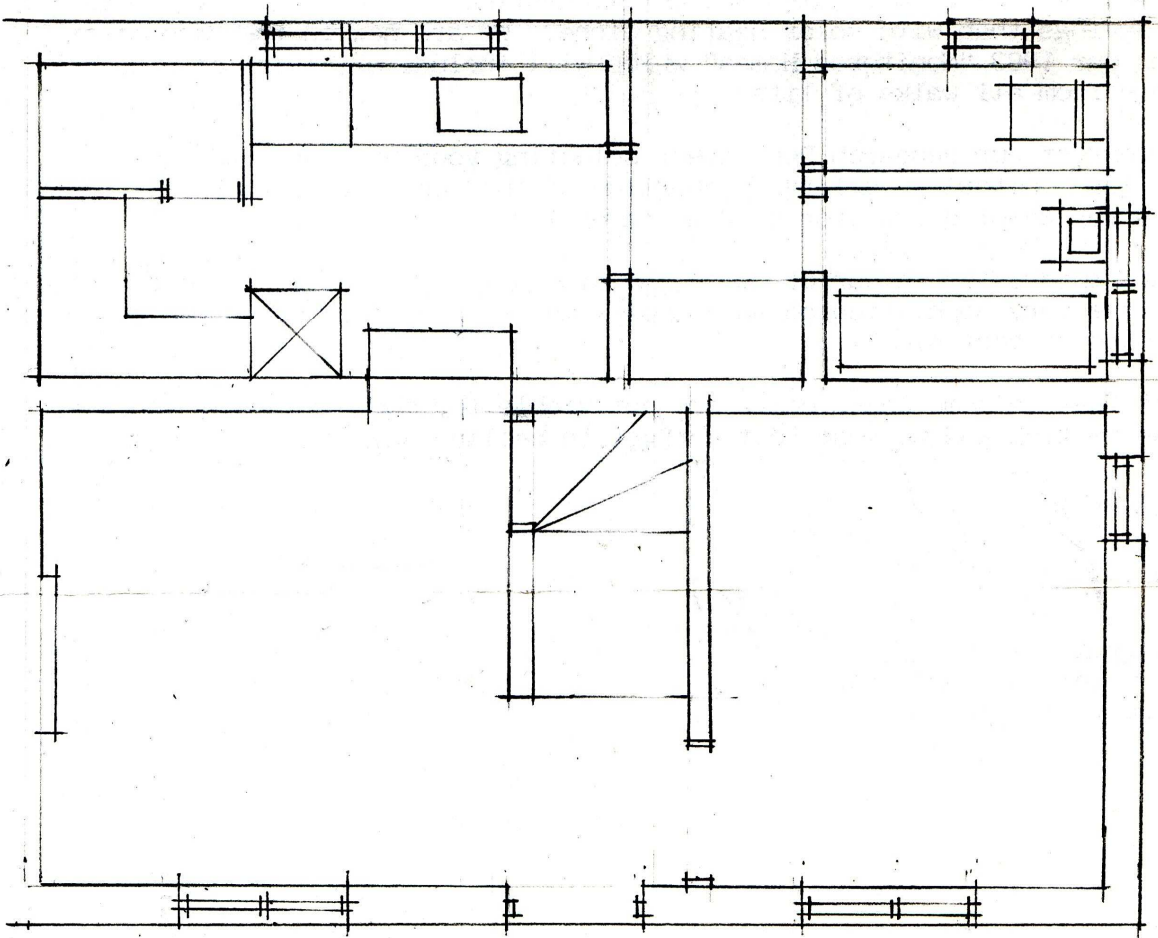
N. Elevation

Front = Bricked over - central porch - 4 windows, 2 either side (1 up 1 d)



"MADGWICKS" BROOK

1/4" : 1'0" (prox!)



"Place Names of Surrey". Vol. XI of the English Place Name Society.

Parish of Albury. Brook, Little Ford, Hull House (6th), Pit House,
probably the house of Richard de la Brooke (1241 Ass)

William atte Broke (1332 SR), Ranulf atte Forde (1332 SR),

John atte Hulle (1332 SR) + William atte Pitte (1292 Ass)

AB. Broc = Water meadow rather than brook

Hyll = Hill

Brook = 1722 Rental. La Hull = 1398 Cr. Hullhouse = 1570 Cr.

Hull = Hoole.

Hulu = OE = husk.

Hule = M.E. = hut, hovel, shed

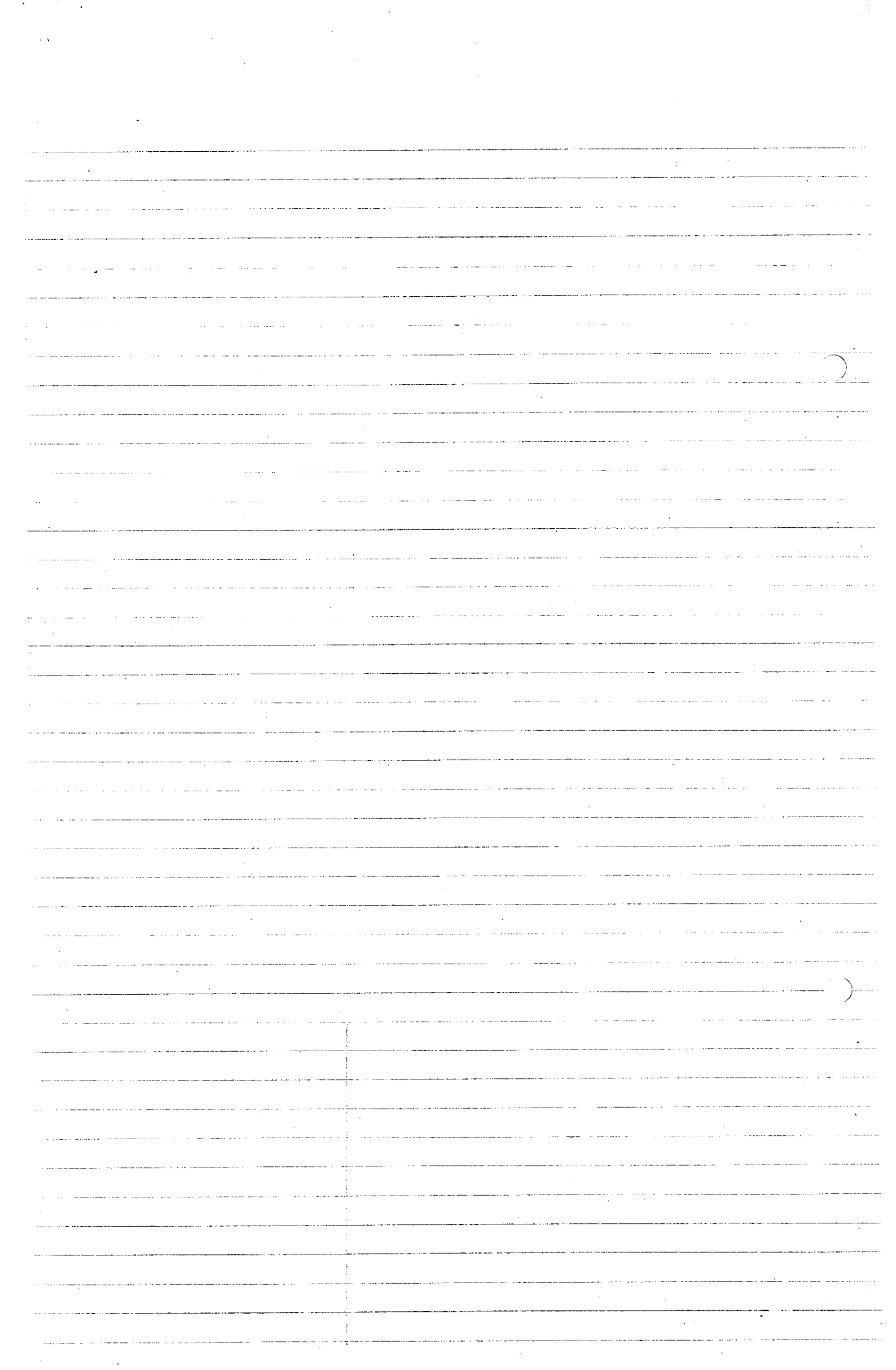
Holl = OE = hollow, hole.

(Hampshire Record Office, 20, South Gate St. Winchester. 0962 - 63153

Surrey Search 13. E.H. Ridlaw. Surrey Ad. Jan 17/18 1975

"Hull House, La Hull of 1398, called in this O.T. Heath's
transcript of the Syon papers Le Bouve or Le Vouve in 1789
formed part of Shelton Bredstone Manor. This 70 acre holding
with Rook's Land and Davis Field had passed with John Whirkbourn's
great Brook Farm, 332 acres, to Henry Drummond by 1839.

In this 17/18th century house, occupied by Mrs. Ann Chemen in 1899
also offered furnished apartments, Brook had the sole command of
its beauty!"



97/7/25. Abstract Book Clifford Mr. Nicholas' Abstract. 12 9/80
 Albury .18th Widdow Chennell for vpper ryders, park 4/8.
 107 Tho. Parsons for vpper ryders, park 2/4
 56 { Will. Luck for Warehouse 1-0-0
 " " for Warehouse 6d.
 " " for Warehouse (?) Mereland 9/7
 Jo. 16 Mary Hilder for Stocklands 4d.
 a lot in Farley
 59 Robt Davy for Hookfield, part of Stockland
 College at Dursale 8d.

Fo. 16. Albury in Farley Stocklands. A Tenement etc. 30 acres land
 31 year? Charles II 26 acres.
 6th Year Eliz 1564 The death of Tho. Antone & Ric^d Q.R. H. F
 Antone his son & heir is admitted 10/3 Anox 1.13.4. 1.0.6
 32 Eliz. 1590 Ric^d a Stone owned is hold by Copy 10/4 - -
 13. Ch. I 1638 The death of Ric^d Antone & John Antone his
 brother's son & his next heir admitted 10/3 - 26.0.0
 John Antone owned is hold of none 10/3 - -
 14 Ch. I. 1639 By a Dropt (?) Copy 10/3 - -
 13 Ch. II 1672 The death of Jⁿ Antone Jun^r & her Alice, wife is
 Will. Hilder is his youngest sister & heir. 1st Proclam^t 9/7 Acow 2.10.0 -
 14 Ch. II 1673 Jⁿ Antone Sen^r surrenders to Alice Hilder who is admitted, 9/7 - 20.0.0
 31 Ch. II ? 1690 The death of Alice Hilder, now wife to Mic. Harney & her

Copy Fo. 31 Mary Hilder is her youngest daughter, admitted (1st Proclam^t) 9/7 ? 22.0.0
 Book 26

Fo. 18. Farley Ryddens - free. A messuage & certain lands. Quare of messuage
 Fo. 73. Cont. of Bonds } 7.0. Upper Rydens.
 13 Ch. I. 1638 Tho. Chennell acknowledged is hold in 4/8 - -

Fo. 38 Albury Upper Rydens - free. A Tenement & certain Lands.
 The Farm (?) with vpper Rydens and vpper Pills (?)

16 Jac. 1618 The death of Ric^d Galton & the Baylife to strevie (?) & who
 was next heir
 7 Jac 1619 Thomas brother to Richard came & sold his share & pd. ye Reliefe (?) 7/- - 7/-
 4 Car. I. 1628 Tho. must be in possession; when he alienated the other park. Rent 4/8
 Now Chennells ye park wife (?) or? Will. Chennell. Quare

59 In Farley Stockland park. vii(?) One College part of ye premises
 containing by Estimation 4 acres, called Hookfield.

22 Jac. 1624 Ric^d Antone & Agnes his wife surrenders ye premises to
 John Hook & Eliz. his wife Rent now ser 8d. - 3.0.0
 14 Car. 1632 Jⁿ Hook 8d.

17 Car 1641 The death of Jⁿ Hook, the son(?) is. Ye heir next Con^v - Nil Hab. -
 21 Car II 1680 The death of Eliz. Hookes John Hook is her eldest son & admitted. 8d. Nil Hab. 3.0.0

23 Car II 1682 The surrender of Hen. Hook. 1st Proclam^t 8d. Nil Hab. -
 24 Car II 1683 The admission of Anne Hook by virtue of his will 8d. - 3.0.0
 26 Car II 1685 The death of Anne Hook & her sister Eliz Hookes admitted. 8d. Nil Hab. 2.15.0

29 .. ? Tho. Castell(?) & Eliz his wife, late Eliz. Hook.,
 surrendered to George Clarke of Shure admitted. 8d. Nil Hab. 1.19.0

33 .. Geo Clarke surrendered to James Kelsey admitted 8d. - 2.0.0
 3 W m 1691 The surrender of James Kelsey to Robert Davy admitted 8d. - 2.0.0
 6 W m 1694 The surrender of Robt. Davy to Joseph Hicks(?) on a mortgage. 8d. - -

1 Geo 1714 R. Davy's death & Mary his daughter admitted in 1716 8d. - 2.17.6
 3 Geo 1717? Eliz. Davy his daughter admitted, a minor 8d. -
 Cont. Fo. 13. Book 26

Fo. 56. Albury. Waresch Hershouer, Herelend. Copy. in Rowley
 A Tenent, certain? described 32 Eliz. 18. 18 Jan.
 A Tenent + 140 acres 26 Car. II.
 8 Eliz. 1585 The death of Will. Parsons, his son Bartho. Parsons
 was admitted. 1.0.6. Anox 4.0.0
 28 Eliz. 1585 Licence to Lev for 21 years - - 7/-
 32 Eliz. 1588 Barth. Parsons owned to hold in by Copy 1.0.6 - -
 32 Eliz. 1588 Barth. Parsons surrenders to John Tickner for Life
 + the to Joene Tickner his daughter + her heirs. They are admitted 1.0.6. - 13.6.8
 Ibid. A release from Will Parsons
 17 Jac 1619 J^{no} Tickner deffaldett (?) d. - to Lev had a licence - - 9/-
 18 Jac 1620 The death of J^{no} Tickner, that Joene was afore dead
 who had been wife to Thos. Greethurst afore dead, surrender
 was offered of ... Joenes made in the lifetime of J^{no} Tickner
 Adminis. of the Greethurst, son suspended. 1.0.6 N.H. 2
 18 Jac. 3 July. On a full hearing Phillip ye younger son was
 admitted according to ye custome of ye manor 1.0.6 - 35.0.0

14 Car II 1673 Phil. Greethurst surrendered on Conditions to Anne Woolven. 105.10.0. 1.0.6. Nil Lab. -
 16 " 1675 Licence to Lev - - 1.0.0
 18 " 1677 Ph. Greethurst surrendered on Conditions for ... the new Anne Woolven - N.H. -
 23 " 1682 Ph. Greethurst surrenders as Security for 212^l to J^{no} Wallther. 1.0.6. Nil Lab -
 27 " Wm. Luck is admitted on Ph. Greethurst's surrender 1.0.6. Nil Lab. 30.0.0
 28 Wm. Luck surrenders to Thos Luck, admitted 1.0.6 Nil Lab. 19.0.0
 29 Thos. surrenders to the use of his wife 1.0.0 - -
 30. Thos Luck owns to hold in 1.0.0 - -
 3 Jac II. 1697 Death of Thos Luck. 1st Proclamation 1.0.6 - -
 Will Luck 2nd Proclamⁿ 1.0.0 - -
 4 " 1698 Will admitted 1.0.6 - 36.0.0

Fo. 107 Albury Upperydons, free. Several parcels viz Linn. Heed,
 Linn Heedfield, 2nd Dese Acre 1st Blawerscroft(?) In all about 17 acres
 4 Car. I 1532 Thos. Gotton, alias Chapman ~~alias~~ the premises
 to Thos Parsons who did homage. But now 2/4 - -
 The death of Thomas Parsons ?
 15 Car I 1559 Thos. Parsons in his Son + heir. 2/4. 3.0.0 -
 1659. The death of Thos Parsons, Thos is his son 2/4 13/- 2.4.0)
 25 Car. Thos. Parsons owns to hold of none Cow. Fo. 24 35 - -

Fo. 115. Albury. Upper Pills. Free. Alias Upper Rydders.
 A Tenent, certain lands in Albury cont. 6 acres. 32 Eliz.
 1 Eliz. 1558 The death of Robert Chapman, alias Gotton, that
 Richard is his son + heir but that by his will he left
 ye premises to his wife for Life 7/- A cow 1.4.0 7/-
 31 Rich. Chapman alias Gotton did homage etc. 7/- - -

Fo. 17 A lot in Farley - Mary Huder (Tickner) Cont. Fo. 32.
 There is a list of Tenents at the end of the Book

- Fo. 13. Hookland. Lev. Viz. One Close(?) 4 acres called Hookfield
see Mr. Nicholas' Abstract p. 51 Rent Roll 88 (Fo. 59?) Rent 8d.
1717. May 17. Eliz Dawys admitted on the 3rd June. Is a Close called Hookfield
on the Deed of her father Rob^t Dawys. Custody to her mother Eliz. 8d. - 2.17.6
- Ibid. Surre^r with Papers dated 18 Nov 1730 (not dated (!)) whereby Eliz. Dawis
of Dorking Spinster surre^d to her heirs till the Marriage had between her
and John Borer of Warham. Then to John Borer for life, to Eliz.
Dawis for life. Then to Rich^d Howler of Slynfold & John Brett of Dorking
& their heirs upon Trust to ... ~~have~~ ... etc as in and by Judgs(?) to be seen(?)
dated 21 Nov. to be made & executed (?) by Mary Borer of Warham of one^d
John Borer on the 1st part, Eliz. Dawis the mother of the afores^d Eliz. Dawis (deceased)
& afores^d Eliz. Dawis & surrender of 2nd part & afores^d Rich^d Howler & John Brett
of the 3rd part.
- 1747 Apr. 20. The surrender above - 1st subs^{is} made for John Borer 8d. - -
- 1748 Apr. 19. 2^d part for John Borer
- 1749 Apr. 4. 3^d part for John Borer
- 1750 May John Borer admitted for life & died feally. 8d. - ?
- 1767 Apr. 28 Deed of John Borer, Benjamin his youngest son & also the youngest
son of his mother (Late Eliz. Dawis), heirs, admitted, showing the just right
of any person or persons claiming under - Deed 21 Nov. 173(?). 8d. ^{no coll.} 3.3.0
- 1772 May 27. Benjamin Howler as only son & heir of his father Rich^d Howler
who was surviving trustee above adm. Jun^r Atty. Is the Trusts in deed
above & afterwards ... with Benjamin Borer of Newington Bulls in the County
of Surrey Esq. admitted, surre^r to use of his will 8d. - 2.10.0
- 1782 ²³ Deed of John Borer & admission of will of Lewis his devisee 8d. - 3.12.0
- 1791 Feb 9. Licence to Wm. Lewis to Lev.
- 1801 May 8. Deed of Wm. Lewis. Adminⁿ of Thos. Borer & Surrender
to his will 8d. - 9.0.0
Licence to Thos. Borer to Lev.
- 1822 ^{Dec} Adminⁿ of Henry Drummond Esq. on Surrender of Thos. Borer. 8d. - 3.0.0
- Fo. 31. Albury in Farley. Copyhold. Stocklands. A Tenement & 30 acres
(Fo. 16) of Land, 31 Car. II. 26 acres. See Mr. Nicholas' Abstract p. 16. Rent Roll 86. Rent 9/7
1721. Apr. 25 Deed of Mary Tickner, Widgeon on Tenement, Barns & 26 acres
of land called Stocklands. Thos. Tickner, her son, heir ... 9/7. ^{more} price 4.0.0. -
- 1722 Apr. 30. Thos. Tickner admitt^d on 2^d Proct & died feally. 9/7 - 29.5.0
^{also for Fo. 32}
- 1747 Apr. 28. Deed of Thos. Tickner. Jas Tickner his youngest B^t heir. 1st Proct. 9/7. ^{Had}
^{no coll.}
- 1748 Apr. 19. Jas Tickner admitted on 2^d Proct & died feally. 9/7 - 30.0.0 ^{for this 32}
- 1751 Apr. 16. A Surre^r pres^d dated 6 Apr. in part by Jas. Tickner to David Whirbourn
of Worsle husbandman & his heirs. He admitted & died feally. 9/7. - 30.0.0 32
- 1761 ⁷ David Whirbourn surrender to use of his will 9/7 - -
1762. Apr. 20. Surre^r presented dat. 17 Oct 1761 whereby David Whirbourn surrender to

- John Pullcock of Knowl in Crenley yelm. on Court = Har the Heirs,
Exors. & Adm^{rs} of s^r David Whitbourn paid to Ann his wife (Dau. of s^r
Pullcock) an Annuity of 16 £ clear of taxes from the death of the said D.
Whitbourn in case she survived him during her life. In discharge of a
Conditⁿ in an Obligation entered into by Whitbourn 31 Oct. 1757 to
Pullcock previous to the Marriage of Whitbourn with his wife. 9/7 - -
- May 7. Licence to David Whitbourn to let for Rent of 9/7
1791 May 10. Death of David Whitbourn. 1st Proct 9/7 - -
Nov. 23. Admission of John Ticknor as Devisee 9/7 - -
- - Absolute Surrender from John Ticknor to Rob^t Prickett, his Admⁿ. 9/7 - -
1799. Enforcement of Rob^t Prickett pres. (?) 2d.
- Fo. 32 Albury in Farley See Mr. Nicolas' Abstract p. (Fo. 17?) Part Roll 87.
- 1721 Death of Mary Ticknor - a parcel of land at Farley Green in Albury
Thos. Ticknor her son heir. 1st Proct 4d. Inere price 40.0.0 - -
1722 Thos. Ticknor admitted, did fealty 4d. - 29.5.0 with 31
1747 Death of Thos. Ticknor, Jas. Ticknor his youngest Bⁿ heir. 1st Proct. 4d. Had no cattle. -
1748 Jas. Ticknor admitted on 2nd Proct., did fealty. 4d. - 30.0.0 with 31.
1751 Apr. 16. A Surr^t presented dat. 2nd Nov. by John Ticknor to David Whitbourn
of George Lamberton, his heir. He admitted, did fealty. 4d. - 22.0.0 with 31.
1761 Mar 31. David Whitbourn succeeded to use of his will 2d. - -
1762 Apr. 20. Surr^t present^d whereby David Whitbourn surr^d to Pullcock
on Conditⁿ see Fo. 31. 4d. - -
1764 May 1. Licence to David Whitbourn to let for 21 years for Till^s next. 4d. - 1.1.
1791 Mar 10. Death of David Whitbourn. 1st Proct 4d. - see Fo 31
Nov. 23. Admⁿ of Jas^s Ticknor as Devisee 4d. -
Absolute Surr^t from said Jas^s Ticknor to Robert Prickett
& his admⁿ. 4d. - -
- 1799 Enforcement of Robert Prickett presented 2d. - -
- Fo. 38 Fullord. Park of Upper Ryddons viz. The Head (?) the Headfield (?)
- Fo. 107 The Downs & the Boarcroft (?) 17 acres. see Mr. Nicolas Abstract p. 107 Part Roll 83
- 1722 Apr. 10. Death of Thos. Persons who hold lands called
Upper Ryddons in Albury. John Persons his son next heir
admitted, did fealty 2/4. No cattle. Distr.
- 1747 Apr. 28. Death of John Persons before - Court - his widow & dau.
- - - - - next to Curtis of Horsham in Sussex admitted, did fealty -
1775 Apr. 25 Alienation of Edward Curtis to Thos Woods 2/4. No cattle. Distr.
- Fo. 73 Albury. Fullord Park of Upper Ryddons. See Mr. Nicolas Abstract p. 38. Part Roll 82 Fo. 18
- 1735 May 7 Death of Mary Chennell who held lands called Upper Ryddons
Sarah Chennell of Crenley wid. her heir adm. & did fealty. 4/8. Had no cattle.
1737 Apr. 19. Death of Sarah Chennell widow. Geo Chennell her son. He admitted. - Had no cattle.
1748(?) Apr. Death of Geo Chennell Har He. - He next to his wife Eliz. but for Distr.
what - - - - - thence known. 4/8. Some little connected to next
e Herriot
- 1782 Apr. Death of Eliz. Chennell widow. 4/8. No stock Distr.

- Fo. 77 Hare House - see Mr. Nicholas' Abstract p. 56. Rev Roll 84. Rev 1.0.0
1734. Ap. 16. W^m Luck^r surrendered a Hare house + 60 acres of Land called Harehouse in Albury ^{resort 2 Jan. 2d.} to the use of his will.
1735. Ap. 9. Death of W^m. Luck. Home known who next Heir or Devisee, 1st Proc^s. 1.0.0. ^{No colls}
- 1736 Ap. 28. 2^d Proc^s for cry ?
- 1737 Ap. 19. Edmund Luck admitted for Life, his son, admitted to the ... in use by the will of W^m Luck. Luck admitted did Fealty. 1.0.0 only ~ 70.0.0
1745. Ap. 30. A Surrender pres^d dated 29 April 1745 whereby Edmund Luck the father + W^m. Luck the son surre^d to Charles Flood to be void on payment of 100 £. + interest. Satisfaction 10g (?) 1.0.0
- 1747 Ap. 28. A Surrender pres^d dated 31 May 1746 whereby Ed^d Luck + W^m. Luck surrendered to Edward Stanton of Gudeford perriwig maker + Mary Gunnor of W. Sainsplaw (?) Spinster to be void on payment of £200 and interest 4.10.0. Satisfaction 10g (?) where Mortgage entered 20 Apr. 1747
1751. Ap. 16. A Surrender by Edward Luck pres^d dated 9 March 1750 to Ed^d Stare (?) to be void on payment of £50. + 4.10.0 interest subject to Mortgage above to Stanton + Gunnor. 1.0.0
- 4 ... 1750 Satisfaction 10g (?) where Mortgage entered 16 Apr. 1751
1758. Ap. 11. Surre^d pres^d dated 4 Feb. 1758 whereby Ed^d + Will^m Luck surre^d to Geo. Eastmond of Shire Farmer to be void on payment of 400 £. and interest @ 4.10.0 on 4th August next. Satisfaction 10g (?) where Mortgage entered 11 Feb. 1769.
- 1761 Nov. 31. Surre^d pres^d dated 19 Apr. 1760 whereby Will^m + Ed^d Luck to Geo. Eastmond to be void on pay^t of 500 £. 4 Aug. next. Interest at 4.10.0 for 4 Feb. 1758 (the 400 £ above is included). 1.0.0
- Satisⁿ 10g (?) ... dated 11 Feb. 1769
1762. Ap. 20. Death of Edmund Luck. W^m Luck hold admisⁿ the 19 Apr. 1787
- 1764 May 1. Licence to W^m. Luck to be for 21 years. 1.0.0. — 1.0.0 ^(1.0.0. No colls)
1769. Apr. 4. Surre^d of 6 Jan 1769 W^m Luck (Subject to Eastmonds' Mortgage) to Richard Bannoy + his Heir also Jane Luck's Surrender + Reb^d (?) of her interest in the same. W^m. Luck undertakes to pay her Annuity of 6 Ann. + to find her Household and Firing in some other convenient place accord^g to the will of W^m. Luck (?Friday) who gave the same to the present W^m. Luck. Richard Bannoy + did Fealty. 1.0.0. — 28.0.0
- 1810 Sept 24 Death of Rich^d Bannoy 1st Proc^s 1.0.0 —
- Oct 15 Admisⁿ of Rich^d Bannoy (the Son) Surre^d to Will. 1.0.0. — 128.0.0
- 1822 Dec 10. Admisⁿ of H^m Drummond on Surre^d of Rich^d Bannoy. 1.0.0. — 100.

97/7/19 Court Rolls Book - Bredon. 1783 - 1852

1823. 29 July. Admission of Henry Drummond - Copyhold Lands called Hull Ryde - 4 acres more or less with their appurtenances upon which a Cottage consisting of 2 Tenements formerly erected (?) within ... 2d. ^{estate?}

1825 Nov. 29. Absolute Surrender of Ed^d Wells, Jas Rudge to H. Drummond - All the Messuages or Tenement with the Beams Stables Edifices Buildings Garden and Orchards and certain Lands - before described as containing by Estimation thirty acres but lately found to contain thirty five acres (be the more more or less) called Hull House or parcel of Hull within the said Manor...

NB. Book recorded for H. Drummond only

97/7/20 Court Rolls Book - Bredon 1855 - 1906

1859 June 2. Death of Henry Drummond, Copyhold Tenant of Hull Ryde upon which a Cottage consisting of 2 Tenements was formerly erected with the said Manor...

Also all the Messuages or Tenement, certain customary Lands containing by Estⁿ 30 acres or thereabouts called Crondells otherwise Pirlands in Albury
Also all the Messuages or Tenement with the Beams Stables Edifices Buildings Garden - Orchards called Hull House a parcel of Hull within the said Manor by the yearly rent of nine shillings and six pence Heriot Suit of Court and other Services (to which said land pertained previous the said H^d Drummond was admitted Tenant ... in 1825) and since the last Court so seized thereof where upon the several Heriots became due and the same Sheep were seized for the use of the Lord of this Manor and compounded for at the price of ten pounds.

1st Proc^s. No one case.

2nd Proc^s. No one case.

1862 May 22. 3rd Proc^s. Algernon Esq. Percy Lord Lovaine admitted Tenant to all the above certain Copyhold Lands called Hull Ryde - - - Crondells ~~and~~ otherwise Pirlands - - - Hull House or parcel of Hull

(1845 Marriage of Lord Lovaine to Louisa Drummond - (daughter of Henry))

1873. May 15. Enfranchisement of Algernon Esq. Duke of Northumberland

Shoptonne Farm

Copyhold. Part of Hilland called Hull House. See Mr. Nicolson's

Abstract p. 147. Rev roll No. 93. Rev 9/6.

1699 This Hammond 2/6
1702 Deat Johana Luck, This Hammond admitted Rev. Heviol. Fine

1. 1727 Apr. 18 Licence granted to Thos. Hammond to lev a messuage, land, parcel of a tenement called Hull Ho. to Jane Deane, widow, for 21 years from Tickelnes next, saving (rev) etc. — — £1.1.0
2. 1738 Apr. 10 A Surrender presented dated 23 Dec. 1737 whereby Thos. Hammond surrendered to the use of his will, that the aforesaid died & by his will dated aforesaid 23 Dec. 1737 devised the said premises to John Wainfold, Wm. Nettlefold, Thos. Wakeham & his survivors, & survivors of em, & his heirs in trust to sell etc. In Wainfold (by In. Wiper his attorney), Wm. Nettlefold & Thos. Wakeham admitted, (fidelity respited). Afterwards they surrendered to John Weston of Gildesford, he was admitted & did fealty. 9/6. No cattle 31.0.0
to be paid in a month Nov no much later for a fine as appeared by what Thos. Weston left, being certainly to much.
3. 1739 Apr. 30. A Surrender presented, dated 1 July 1738 whereby In. Weston surrendered to use of his wife (30 acres)
4. 1752 Apr. 6 Deat of In. Weston who by his will admitted in court devised the same to his wife Mary & her heirs. She was admitted, & did fealty & surrendered to the use of her will 9/6. No cattle £24.0.0
to pay attorney next pd. 24 April
5. 1756 Mary Weston surrendered, per attorney to Jones Palmer. He was admitted & did fealty 9/6 — £20.0.0
6. 1763 Apr. 11 Deat of Jos Palmer Ann, his only child, heir, admitted & did fealty 9/6 No cattle £36.0.0
barthes folio 65
7. 1764 Apr. 30 Deat of Ann Palmer. By will to cousin John Jones & Ann his wife for their lives & that of longest liver, to Jones Jones their son & the heirs of his body; in default, the remainder to Chas. Tickner & his heirs aforesaid. 9/6. Had no cattle.
8. 1765 Apr. 22 2nd Petition for John Jones & wife.
9. 1766 Apr. 7 John Jones & Ann his wife admitted for their lives & the life of the longest liver. He did fealty. 9/6 — £50.0.0
for this folio 65 to be pd. in a month
10. 1794 Feb 21 Recovery by Jos. Jones & release to same
11. 1800 July 3 Conditional Surrender for same to Stilwell & Woods 9/6 — —
12. 1800 Dec. 19. Acknowledgement of Satisfaction
13. 1801 June 4 Conditional Surrender for same to Wickwork & Wells. 9/6 — —
14. — Acknowledgement of Satisfaction
15. — Absolute Surrender from Jos. Jones to Wm. Wells, his admission & surrender to will 9/6 — £37-10-0

16. 1821 Oct 21 Presentation of Absolute Surrender from Wm. Wells to Ed. Wells. —
 17. 1822 Dec 10 Presentation of an Assize from Wm. Wells to James Rudge —
 18. 1823 Nov 17 Admission of Edward Wells on forfeited surrender
 of Wm. Wells 9/6 — £30.0.0

CONTINUED IN FOLIO 139

- from Folio 33. Hull house - all the Messuage, the mess etc.
 + certain Lands containing 35 acres by admission called
 Hull House, a parcel of Hull. Rent 9/6. Heriot = B.B.
 19. 1825 Nov 29 Presentation of an absolute surrender
 from Edward Wells, James Rudge to Henry Drummond, Esq.
 and his admission. 9/6 — £52.10.0

Quit Rent = Sum paid by Freeholder or Copyholder in lieu of Service

NOTES 1. Mr. Nicholas of West Horsley Place sold to the Countess of ...
 the Manor of Shalford Bradstone in ? 1727? doubtful

2. Rent = 9/6. Heriot = B.B = Best Beast. Fine = Payment of money
 3. Conditional Surrender = ? Mortgage
 8. Tenement = House, Land, or anything rented. Dwelling House
 4. Absolute Surrender = ? Sale
 7. Messuage = Dwelling House with its Outbuildings and Land
 5. Folio 65 = a Copyhold in Wensford called "Howbrookes"
 6. Assize = Legal transfer

COURT ROLLS, MANOR OF SHALFORD BRADSTONE ?? small notebook
 1802 Hull House + 4 acres, S. Thornton, (Albany Park) ? Copyholder James
 Drummond, at Hull Road

TITHE MAP 1839 (Approved 30 April 1838)
 Landowner Occupier Description Soil Cultiv? Quantity Agr. Charge Remarks

318.	H. Drummond	In. Whitbourn	<u>Water Meadow</u>	Grass	30b. 19 pcd.	-	rent Holt £1.8.7
319	James Rhoades	Ch. Edner Lancr. Loreland	2 colts <u>gardens</u>	-	23 poles	-	H. Drummond rent
320.	H. Drummond	James Harrison	<u>Cott. Garden</u>	Garden	1 rood. 14 poles	-	-
321	H. Drummond	In. Whitbourn	<u>Bacon Acre</u>	Arable	4 A's 13 R's 16 p.	-	James Harrison rent (15 4/6) Holt £1.8.7

Folio 16 ... lying between Hullcrose & Lockhursthatch. Hullcros alias Hullcros
20 acres, chiefly let to H. Saunders.

Folio 18. Hullcros, 4 acres, chiefly let to Saunders, Cooper & Lockhurst.

Folio 17 Hulland, part of Storkhouse, 16 acres, chiefly let to Saunders.

? 1703 diet of Homage, H. Saunders admitted to 4 acres copy called Hull & Albany. 2d

Folio 19. Copyhold. Hullhouse park, being 7 acres, 3 which are new fields,
2 acres are called Wainham & 2 acres and a floor, a parcel of Hull House.
(See Mr. Nicholes Abstract, p. 151. Rent roll 95.

1725. Mar 31. Death of H. Saunders. Howfield. Homage know not who is next heir.

1727 Apr. 18. 2d paid for heirs of H. Saunders. - (Blank left for Heriott). -

1728. May 7. Henry Saunders, son and heir of Ann Saunders admitted
on 3rd July & did fealty. 2/6. - £6-6-0

1750. Death of Henry Saunders, Henry his son admitted etc.
Surrendered & re-admitted as Fo. 16. 17. & did fealty. 2/6. H - see Fo. 16.
F = 1st admision 6 yrs.
2nd admision - nothing

1759 Apr. 23. Licence to H. Saunders in Fo. 16. F - see Fo. 16

1783 Apr. 28 Death of Henry Saunders. Descended to Henry Saunders,
his eldest son & the heirs of his body. His admision in Tail. F = for the fine
Fo. 16. 17.

1783 May 9. Recovery suffered by Henry Saunders.

1787 Dec. 17. Admission of George Bowbrick on Surrender of H. Saunders.
Surrender to his wife

1792 Apr. 23. Absolute Surrender of part of his property from Geo. Bowbrick
to Thomas Jones (See No. 124) *

1802 Sept. 13. Death of Geo. Bowbrick & admision of Jones Bowbrick,
John Cooper, Horton Devises in Trust. 1/- 1 sheep. £12-0-0
- Absolute Surrender from Devises to Samuel Thornton Esq.
& his admision 1/- - £9-0-0

1804. Apr. 30. Enfranchise ment of Robert Thornton Esq. in Trust for S. Thornton Esq.
? 5 acres only - no house? Henry paid to T Jones

Folio 70. Brookmead field, pr. of Storkhouse. 1799 Enfranchise ment of Wm. Rowland.
see over 3 roads

Folio 124 (from Fo. 19) Copyhold. Hullhouse park, viz. All that College or Tenement
with the Garden there to adjoining being part parcel of all that College or Tenement
with an acre of land there to adjoining & a floor containing 2 acres, all which
were part & parcel of Lands called Hullhouse. Rent 4d.

* 1792 Apr. 23. Admission of Thos. Jones on Surrender from Geo. Bowbrick. Rent 1/6

1810 Sept. 24 Surrender of Thos. Jones to his wife

1839 June 4. Death of Thos. Jones. Could this be 1829? see R.R. 1827/29

MS. 1832 - ~~Thos~~ = Jones Rhoda (as Title Appointments near 1838)
Copyholder ~~also~~ 1832 = J.R.

Fo. 4. A Tenement and Lands called Lepscorb - John Woods

Fo. 70 Copyhold 1737. A Surrender presented dated 16 September 1736 whereby Henry Saunders surrendered (a parcel?) of land called Brookmeadfield, 3 roods, part of Farm & Lands called Stonehouse, abutting and adjoining against a road or driveway of Mr. Henry Saunders, 12 foot in breadth at West end of aforesaid(?) field against a garden belonging to Thos. Galton on the West, against land of Henry Saunders called Brookmeadow on the South against w. (ditto?) meadows of Thos. Ticker on the East a Highway leading from Sheer(?) Heath to Brook on the North, to the use of Ed^d Risbridger who surrendered of same to himself and wife Ann for their lives & the life of the longest liver - Is Ed^d Risbridger heirs etc.

Bolt admitted & did fealty. Rent appointed 6^d. - 10/-

1762 Apr. 19. Death of Ed. Risbridger Thos. his only son & heir. 1st Proc^{ts}. 6^d - No cattle

1763. Apr. 11 Thos. Risbridger admitted 2nd Proc^{ts} & did fealty. 6^d. - 4.0.0

Son court surrendered to use of his will.

1773. Apr. 19. Thomas Risbridger succ^d to William Rowland of Albury Eng. -

his heirs. He admitted & did fealty. 6^d. - 3.10.0

1774. 11 Apr. Wm. Rowland succ^d to the use of his will

1799 Apr. 18 Enforcement of Wm. Rowland. 2^d

Fo. 108. Copyhold. Pitthouse, ab. Pittland ab. Crondalls. A Tenement and about 30 acres (not mentioned for now(?) on the Copy) but by Thos. ~~James~~^{Leves} is amount to 66.1.30 held of the Manor of Shelford Breinton by the rent of 12/3, Fealty, Suit of Court & other Services, Heriott wth due(?) on Death or Surrender. See Mr. Nicholes' Abstract p 141 Rent Roll 92.

Note - This must comprise part of the freehold.

1724 Apr. 24. 7 Geo 1. Thos. Chenell in consideration of a Marriage introduced between him & Margaret Butt adopted marriage parties surrendered a Tenement or Tenement & 30 acres of land called Crondalls, ab. Pittlands in Albury to the use of himself till the marriage, afterwards to himself for life & to Margaret for life for her jointure in lieu of Dowry. To the use of the heirs of the body of the afores^d Thos. Chenell on the body of the afores^d Margaret to be begotten succ^d to the heirs of Thomas. Bolt admitted accordingly & then did fealty. 12/3 - 10.0.0

1759 Apr. 23. Death of Thos. Chenell & Margaret his wife who holds as above. Thos. Chenell youngest son & heir of the body of the afores^d Thomas on body of afores^d Margaret. He admitted & did fealty. 12/3. No cattle. 21.0.0

1788 Aug 4. Received mff(?) by Thomas Chenell & surrendered to will. 12/3 - -

1801 June 4. Death of Thomas Chenell 1st Proc^{ts}. 12/3. 1 Cattle -

July 3. Will of same. Admission of Elij. Lumbert & surrender to his wife 12/3. - 34.0.0

1825. Nov. 29. Abol^{ts} Surrend from Jas. Lumbert & Elij. his wife to

Henry Drummond Esq. & his adm^{ns} 12/3 - 45.0.0

Fo. 115. Copyhold. A Cott. $\frac{1}{2}$ an acre joining to Chesnells called North on the East
- Rich^d Arlonses South called Storkled & on Rich^d Hemmonds called
~~Storkhouse West~~, and the Highway from Farley to Shire, North. ud. 6d. 6d
6. Car. 1. I grant to John Arlonses. ud. 6d. 6d.

Q. if not Eliz. Gravett (or John Edwards) or w^f late Ralph Heron
or Q. if not w^f L^d Onslow ... to Henry Storkhill with Jane wife of
Geo. Stillwell was admitted on death. Joan Capton (?) her wife & W.M.

Ind(?) With the papers of this Manor is a Draft of a ... whereby
Thos. Lord Onslow (no date, but drawn by Mr. Wylor) ... to Henry
Storkhill a Cott. & 10 rods of ground Greef(?) Hill in Wensell
formerly Copyhold ... Jane wife of Geo. Storkhill & Loring (?)
surv. of court etc. and other freeholders. Rev Roll No. 91

2/6 or 4/6^s. 2/6 in lieu of
heriot

1750 Death of Henry Storkhill seized of ... above with ...
to the use of the manor. 2/6. 2/6. -

? ? ?

Ed. Diamond d. 1628
and Rich. Diamond 1600 -

RENT ROLLS

SHALFORD BRADSTON

SHALFORD BRADSTON - Rent Roll " for the Feast Day of the Annunciation of St. Mary the Blessed Virgin in the Year of our Lord One Thousand, Six Hundred Ninety and Nine "

1. RENT ROLL FOR 25 MARCH 1699 97/7/32 (1)

No. 64	of <u>Thos. Hammond</u> for part of Hull House.	2/6
65	Thos Hammond for Hullend	2/8
66	of her for New Field, ^{Worsham} pr. Hull House	2/6
67	" " " for Stork House	5/6
68	of Ed. Harshon in right of his wife for Hull Ride	2d.
* 63	of Henry Chennell for Pitthouse	7/3 ?

2. QUIT RENT ROLL MICHAELMAS 1719 In Albury. 97/7/32 (3)

92	For Pitthouse. Thos. Chennell	2/3 ?
93	For pr. of Hull House. <u>Thos. Hammond</u>	9/6 ?
No. 94	For Hull Lands, Teeres Henry Saunders	2/8 ?
95	" New Field, pr. of Hull House	2/6 ?
96	" Stork House	5/6 ?
97	" Hull Ryde	2d
98	" Always in Farley	3/5 ?
99	" Coltepe & Rod (?) in Farley. Ralph Morok (?)	2d.

3. Rent Roll prox 1727? 97/7/32 (2)

72	Thos. Chennell for Pitthouse	7/3
No. 73	<u>Thos. Hammond</u> for part of Hull House	9/6
74	Henry(?) Saunders for Hullend Teeres	2/5 ?
	" " " Newfield, pr. Hull House	2/5 ?
	" " " Storkhouse	5/6
	" " " Hull Ryde	2d
	" " " Always in Farley	4/5
	" " " Coltepe on road in Farley	2d
	" " " Teeres " "	4d
	" " " Duncombs loop(?) at Smeconbs(?) loop(?)	2d

5. 97/7/30. Rent Roll for Shalford Bradston and Clifford, 1676, no rentw: Hull th.

4. RENT ROLL Michaelmas 1775 97/7/30

<u>John Jones</u>	part of Hull House.	Copyhold	9/6
Henry Saunders	Hullend	"	2/8. 2. 5/4
"	pr. " called Newfield.	"	2/6. 2. 5/-
"	Storkhouse (pr. Hull th.)	"	5/- 2. 10/-
"	Hull Ryde	"	2d. 1. 2d.
Routland	Brookweed field, pr. Storkhouse	"	6d. 3. 1/6

ALBURY PARK

- 1042 Azor
- 1066 Richard de Tenebride
- 1220 David de Tarpenville
- 1327 Albury + Stoke d'Abernon - passed to Jan Heleghwell, wife Sir Edward (later Lord) Bray.
- 1557 John 2nd Lord Bray died. Estate divided between 6 daughters
- 1603-1634 Sir Edward Rendell of Chilworth
- (1637 Mortgaged to George Duncombe)
- (1641 George Duncombe took possession as mortgagee)
- 1644 Thos. Howard restored as Duke of Norfolk
- 1646 Tenor passed to eldest grandson Thomas Howard
- 1653 Tenor conveyed to brother Henry Howard
- 1684 Tenor bought by Heneage Finch
- 1714 Heneage Finch took title Earl of Aylesford
- Heneage Finch, 4th Earl Aylesford
- 1780 Estate sold to Captn. (Adm^l) Hon. William Clever Finch
- 1794 Son inherited
- 1799 Lady Finch, widow, died
- 1800 Samuel Thornton bought Albury Estate - Director, Bank England
- 1818 Estate ~~divided~~ bought by Ch. Well
- 1819 Henry Drummond bought Estate
- 1845 Drummond's eldest daughter m. Lord Lovaine, eldest son East Bevelley
- later, 6th Duke.
- 1860 Estate passed to Lady Lovaine, later Duchess. (7th)
- 1890 Duchess died, estate came into Percy family

1955 Hobs, Bucking of North

1969 Mutual Households Association: from "Albury Park and the Old Parish Church" Charles Wolansky.

Next visit: Oct 1st + Post 1719

Little Notebook: 1000 (S. Thornton)

Sale to Shalford Road 150. date?

Early 18th and 19th Cols

Loas Stonehouse (Stoke Newington) = Shapstone? NO

Anthony Browne's Notebook "Albury Village before we Finch got out of his coffin." Late 1780's? to 1800's. Interspersed. 1191/2

Baillif's Notebook 1800-2. 52/1/2. Fascinating. e.g. Jan 1800.
"Huge rhubarb on kitchen chimney" Why?

SHALFORD BRADSTON Rent Rolls Cont. (Books).

4 1/80

97/7/32(6) Rent Roll of said Manor renewed up to a General Court Baron in the 2nd year of the Reign of our Sovereign Lord King William IV and in the Year of our Lord 1832 before George Potter, Gentleman, Steward there.

1832

<u>Tenants</u>	<u>No. in Abstract BK.</u>	<u>Estates</u>	<u>Tenure</u>	<u>Quit Rents</u>	<u>Henols</u>	<u>No. Years due</u>	<u>When Paid</u>
				<u>Total Arnts due</u>			
		For Hull Rydes	Copy.	2d.	B.B.		
1. Drummond Henry, Esq.	18.	4 acres in Albury.	Copy.	2d.	B.B.	4.	8d. Mich. '36
2. Same	33.	For <u>Hull House</u> or parcel of Hull in Albury.	Copy.	9/6	B.B.	4.	£1.18.0. pd. once
3. Same	108	For Crondalls alias Pittlands in Albury	Copy	12/3	B.B.	4.	£2.9.0 the same
4. Jones Rhoda.	124	For a Cottage or Tenement & Garden in Albury, pr. of <u>Hull Ho.</u>	Copy.	4d.	B.B.	46.	= 15/4 Mich ^s 1840 (1796)
<u>NB</u> Grently Kitcher, Lord.	30.	For <u>Hull Ho. alias Hull House in Womersh.</u>					

RENT Roll for 16 Oct. 1829/32 97/7/32 (5)

1. Drummond, H. Esq.	18.	For Hull ryde, 4 acres in Albury	Copy.	2d.	B.B.		
2. The same	33.	For <u>Hull House</u> or parcel of Hull in Albury.	Copy	9/6	B.B.		
3. The same	108	For Crondalls, alias Pittlands in Albury.	Copy.	12/3	B.B.		
4. Jones, Thomas	124	For a Cottage or Tenement & Garden in Albury, pr. of <u>Hull House.</u>	Copy.	4d.	B.B.		

RENT Roll for 11 MAY 1827 - 16 OCT. 1829 97/7/32 (4)

1. Drummond H. Esq.	18	For Hull ryde, 4 acres in Albury	Copy.	2d.	B.B.		
2. The same	33	For <u>Hull Ho.</u> or parcel of Hull in Albury.	Copy	9/6	B.B.		
3. The same	108	For Crondalls, alias Pittlands in Albury.	Copy	12/3	B.B.		
4. Jones Thomas	124	For a Cottage or Tenement & Garden in Albury, pr. of <u>Hull House.</u>	Copy.	4d.	B.B.		

RENT Roll for SHALFORD CLIFFORD Michaelmas 1719 97/7/31 (4)

see also 97/7/30 (2), (3)

58. Lambert, Arthur		Hall house		0 - 9 - { ? (loft off)			
82 Sara Channell (?)		Widow		Vyner Rydon ?? pr.		4/8	
83 Parsons, Theo. (John)		Ditto		pr.		2/4	
84 Luck, William		Warehouse				£ 1 - 0 - 0	
85 John Risbridge		Warehouse				6d.	
86 Tho. Tickner,		Storklands, pr.				9/7	
87 "		Cottage in Farley				4d	
88 John Brown		Hookfields, part of Storklands				8d	
89		Cottage in Dorsgate				6d.	

[The page contains faint, illegible text that appears to be bleed-through from the reverse side of the paper. The text is arranged in several paragraphs across the page.]

Serial No. 84. Ref. 681. College, Brook. Area .585. $\frac{1}{2}$ yr. 15 June or Christmas
 Rev £ 3.17.6. Brick, stone & tiled semi-detached College with 2 downers.
 G.F. Front door opens into sitting room (low pitched) - small sitting room.
 T. & tiled addition - Scullery. Sink (c). Range. Copper. Larder. 2 Bed^{ms} in Roof
 T. & tiled woodshed in good repair. Roof old but sound. Small heated glass house
 T. & pertiled Pool shed. T. & tiled chicken house. Large garden, low river. Water
 laid on by Estate Supply. New 1923 Repairs to range, roof £5.2.8, of wood house

84. 660 College, Brook Area .678. Rev $\frac{1}{2}$ yr. £ 3.17.6.

Brick, stone, tiled, semi-detached. 1 downer. Good repair. Roof old, sound.
 G.F. Front door opens into Living Room - range, sink (c), Larder. Sitting Room.
 upstairs - 2 Bedrooms. Good staircase landing, Roof old, sound.
 Outside - Timber tiled woodhouse (out). T. & tiled E.C. Large garden, low river.
 Water laid on. New 1922 Repairs to range etc. £4.0.0, taking up &
 re-laying cement floor to kitchen £5.10.6. 2 Colleges, 1918 value £200.

85. 731 College, Brook Area .530 1 int. Rev £ 4.7.6.

Brick & tiled S.D. College, 3 downstairs rooms, 2 rooms up.

T. & pertiled large woodshed (now divided into small garage & woodshed). E.C.
 Large garden - low river. Roof good. Water laid on before 1918. Estate supply.

85. 685 College, Brook Area .547 1 int. Rev £ 3.17.6.

Similar College - partly built stone, range east on W. side.

Woodshed (copper) & old pipe type. 2 Colleges, 1918 Valuation. £220.

Large garden - low river. Water from Estate supply.

86. 572 College, Brook Area .778. 1 month. Rev. £ 8.2.6 All fields

Stone, brick, $\frac{1}{2}$ timbered college, detached. No one in. 6-roomed
 college - old. with T. & tiled woodshed & E.C. at side. Large garden,
 low river. 1918 value £230

87. 571 College, Brook Area .725 1 month. Rev £ 5. Quicker?

Small attractive detached college - old. Brick, stone, timber & tiled.

No one in. 3 Beds. Sitting Room, Kitchen, T. & tiled woodshed.

Roof old but sound. Old T. & tiled Party. Old T. & pertiled Shed. E.C.

$\frac{1}{2}$ acre detached garden opposite side of road in low river (half snows
 away). 1918 value. £170

86. 579 College, Church Lane Area .135 3 months. Rev £ 5. Attractive ^{timber} ^{floor}

$\frac{1}{2}$ Timber & brick noggin & tiled semi D. College. V. old. Tiled roof. Pool order.

Brick work yellow washed. Living Room (range), New Sitting Room added 1922
 (W/boerd & tiled). V. small scullery, sink (c). New larder added 1922.

"Landing Bedroom". Bedroom (no fire place). Bedroom. Outside woodshed. T & T

Water from Estate Supply. Deduct cost in 1922 abt. £30. Cap^l Improv^t. Value £100

87. 576 College, Church Lane Area .135 1 int. Rev £ 6. S/D College constr^d as low

with brick & tiled addition (about 60 years ago). Large Living Room (range), dress
 ock ref^{ns}. Large scullery, sink (c). Copper (c). V. small sitting room. Larder.

Landing Bedroom. Bedroom (no fire place). Small bedroom. Small Bed^{rm} no F.P.

T. & tiled woodshed. Estate water. Bricks & addition remain in place. Roof sound

Bellway College. 1925 - 60 = 1865 price. 1918 value. £110

55. 645 Collège, Church Lane. Area .483 For. imp. Rent free.
 S/D Collège, old. $\frac{1}{2}$ timbered, brick, tiled. Roof old, badly rots in rear slope.
 Lean-to Scullery (cooker, sink (c)). Sillip Room. Living Room. V. small Bedroom.
 Bedroom (fireplace). tiled woodhouse, $\frac{1}{4}$ acre garden. Water laid on.
 New £10.12.1 for new ropes in 1919 & 1926. 1918 Value £90.
54. 609 Collège, Church Lane. Area .550 $\frac{1}{2}$ year 15 June or Xmas. Rent £5.9.0
 S/D Collège, old. $\frac{1}{2}$ timbered brick & tiled, Roof old. Similar to above.
 but apparently 2 bedrooms. $\frac{1}{4}$ acre garden. Road frontage. 1918 v = £130.
52. 732 Collège, Church Lane. Area .750 $\frac{1}{2}$ yr. June or Xmas Rent £5.17.0
 S/D Collège (formerly Barn). Brick & tiled. Henrip tiles to upper chimney.
 Roof needs replacing. Living Room (range) & entrance Lobby. ~~Living Room~~
 Scullery (sink (c)), Brick floor, low pitched. 4 Bedrooms. Water-Entail mpph
 Woodhouse & E.C. $\frac{3}{4}$ acre garden including nice front garden.
 1923 £6.2.0 roof repairs. 1926 £6.17.0 Repairs to drains, project renewed
 1926 £9.0.0 New range. Renew all fence to Lane. Total £21.18.0 on 20/15.
 Deduct Capt. Imp. £10. 1918 Value £225 *Sandra 20/15*
53. 588 & 589 Collège, Church Lane. Area .838 $\frac{1}{2}$ year, June or Xmas Rent £4.13.0
 + £1 = £5.13.0. S/D Collège as last. Entrance Lobby. V. small Kitchen
 (range & dinner). V. small Sillip Room. Sillip Room. Bedroom. Bedroom leading
 to Back room. Tiled woodhouse. E.C. Nearly $\frac{3}{4}$ acre garden.
 Deduct £10. C. Improv. (See Serial 52). 1918 Value £225 *1918 v = £225*
45. 610 Old Rectory Lodge Area .030 $\frac{1}{2}$ yr. June or Xmas. Rent £3.14.0. No garden
 Brick, rough cast, tiled Bungalow. Fairly good condition. Kitchen roof new.
 Sillip Room. Small Bedroom (no F/P). V. small Bedroom. Lean-to Store - incl.
 Kitchen (range, sink (c)). Wash House - upper detached. Larder. E.C. owned 1918 v. £50
38. 527. 528 Valle End (abridged) 1.280 Lease 21 years from Nov. 1907. £57.14.0.
 1918 Value £1,391 subject to Lease
37. 652. 714. 720. Pitt House (abridged). 3 Tenants 1918 Value £200
18. 538. Wester House (abridged) 4.620 Area. $\frac{1}{2}$ year. Rent £140. Value = £3,200
- 11 562. 692. 693. 711. Albury House 7.588 acres. 1918 Empty, derelict.
 Now accommodation as 2 collèges and 1 vacant Collège. Tiled roof - all imp.
 Walls - cobble, brick, rough cast. Design inside v. workable; it is and was
 in hopeless disrepair. 1918 Value £1,050.
7. 518 Forsley Green Farm (abridged) 213 acres. Yearly rent £98.0.0
Shophouse Farm. Old. Stone, brick, tiled, part $\frac{1}{2}$ timber, which
 bulges in upper elevation. Roof old but fair. 3 upstairs rooms
 and 3 down, also attic. Water-well. R.W. tank. (Really only
 a collège). Hamstled. Timber, w/boarred & tiled building now in
 good repair. Present tenant (cousin of owner) says a house was empty
 for 4-5 years previous to sale & about £400-500 spent on
 general repairs.

Volume I. 1-98 Conv.

- 6. 508 + 509. Brook Farm, Brook No Collets
- 2. 505. Little Ford Farm V. old farmhouse, L-shaped $\frac{1}{2}$ timbered tiled roof. It is in 2 collets as in 1918. 1 with 3 bedrooms (1 too deep 15 use) & 2 rooms downstairs. Woodhouse. E.C. New Butler. The other has 2 Bedrooms, 3 downstairs (1 too deep 15 use). Lean-to washhouse. E.C. well water. Barnford Place

VOLUME II. 100 - on.

- 100. 658. Collage, Brook. Area .060. $\frac{1}{2}$ year. June or Xmas Rev £6.10.0
Stone, brick, tiled collage. Kitchen (cooker, sink). Sillip Room. Living Room. 2 Bedrooms + 1 bedroom in roof over kitchen. 1 attic in roof. Bed settlement over front door. Roof old, sagging. Washhouse - copper & E.C. Large w/boarded & tiled wood shed. Thames'
- 566. Collage, Brook. .050 $\frac{1}{2}$ year June or Xmas Rev £5.0.0 Don Holt (Peter Holt)
stone, brick, tiled collage (middle of 3). Prox. 4 rooms. Brick, slated lean-to scullery. w/boarded & tiled wood shed, E.C. Settlement over Bedroom window at rear. Value 658 = £160 + 566. £120 = £280
- 101. 657 House, Shop, Brook. Area .095. $\frac{1}{2}$ yearly rev £16.0.0.
Brick & tiled house & shop. Roof old, partly been repaired with slates. Shop (off licence). Kitchen. Larder. Back Sillip Room. Front Sillip Room. 4 decent Bedrooms. Cellars (dark). Timber, w/boarded & c.l. wash house (copper). Dirts E.C. Stone & w/boarded & tiled stable (filled with stones) Loft over. Well. Holt. Value £400
- 102. Ref. 696 Collage, Brook. Rear of "Hull House". ??
Area .305 $\frac{1}{2}$ year June or Xmas Heddon Collage
G.F. Low pitched. paved G.F. Sillip Room - oak beams & rafters. Scullery (range, copper, stone sink). Oak rafters ad pump. (Well in garden, water good). Large larder. Lean-to store or workshop (concrete floor, boarded ceiling).
Upstairs 2 Bedrooms. Boxroom. (all in roof).
A very old timber, brick & stone & tiled collage. Front bulges. Roof is old & sags; with lean-to brick & felt workshop.
Outside Timber & painted woodshed. Timber, c.l. E.C. & tiled shed
Small but good garden.
~~Timber~~ Timber & c.l. Chicken house.
New 1925 £27.18.8 on new windows, new front door, repairs to roof clean up out well & repairs to pump.
Deduct £15. Capital Improvements. Value £140

133. Land & Buildings at Brook 6.689 acres.
 659 2 bricks & tiled pyrites - roof bed
 Timber & tiled 2 stone slabs
 " " " Covered
 " " " Store (2 copers)

Added since Sale store, c.i. Loading bay for Coal
 Timber, c.i. Pip pounds (3).

Land - Large arable field. Small grass field.

109. 663. Shack Lane Farm 14.600 acres. $\frac{1}{2}$ yr. to Hildesheim. £15.

House & buildings undergoing extensive reconstruction. In 1918
 3 rooms up end 3 rooms down. £880

153. Gardens, Brook 3 months. 8 Feb. 1876. 0.459 acres

Now has humped bank. In 1918 probably a garden.
 (A building site). £50

extract. TERRIER TO THE SURVEY OF ALBURY ESTATE 1896.

Brook Lane

No. on Ord. Plan.	Inclusion No.	Form.	Tenerv.	Name of Inclusion	Area.
2.	107a	-	J. Terrier.	Brook Lane Meadow	3.325
2	108	-	In Hand.	Laundry	.275
"	109	-	Mrs. Jelley.	Collage & Garden	.675
"	110	-	In Hand.	Nursery	.470
"	111	-	Her ^y Lewis	Collage & Garden	.580
"	112	-	Tiekner	"	.480
"	113	-	Redwick	"	.530
"	114	-	Mrs. Longhirst	"	.780
"	115	-	A. Atfield	"	.200
"	116	-	"	enclosure	.475
"	117	"	Benj. Butler	Collage & Garden	.354
2	124	-	Mrs. Hamshrie	"	.054
	125	-	Arthur Davis	"	.053
	126	-	Fred Holt	"	.070
	127	-	Mrs. Hamshrie.	small enclosure	0.022 (.199)
	128	-	Mrs. Osborne.	Collage & Garden	0.331

1. Albury. Bredston Clifford Herov. Lady Finch
 For Hull House - Reper. (i.e. peppercorn rent) 4/8
 Ditto for Upper Rydens
 Now Thornton

2. Albury Hench, wife of John Lenthurst for Hull Ryde 2d.
 Pd. 1s 1798 of? —
 Now Hermond July 1823 ??

3. Albury Geo. Bowbrick, for Messuage, Floor, Hull House. 1/-
 19 1/2 yr. pd. 1s 1798 (?)
 3 yrs. pd 1s Michaelmas 1802
 Now Thornton

4. Albury Thos. Jones for Messuage, pt. Hull House 4d. Holls
 124 Now Thornton ? never was Thornton. (Peter Rhoads) 1792

- In pencil Thos. Jones bought his copyhold of Geo. Bowbrick. It is
 now occupied by Lawrence Loveland and James Smith -
 Mr. Jones gave only 15 to Mr. Henry Pease says it was offered
 to his father - Jones has built another tenement since.

5. Albury Wm. Bowland, Heris for Stockhouse. 2d
 Now Denill Morn (?)
 12 years pd. 1s Michaelmas 1809 2/-
 11 year 1s Mich^s 1820 1/10

6. Albury Thos. Clemell. Mr. Lenthurst for Pirklands 12/3
 Pd. 1s Michaelmas 1800 12 years 7-7-0
 2 yrs. - - - 1802 1-4-6
 3 " - - - 1805 1-16-9
 4 - - - 1809 2-9-0
 2 - - - 1811 1-4-6
 2 - - - 1813 1-4-6
 1 - - - 1814 12-3
 1 - - - 1815 12-0 (?)
 3 - - - 1818 (?) 1-16-9
 5 - - - 1823 3-1-3

- Drummond from Michaelmas 1823
 Paid 1s Michaelmas 1823 by Mr Bowley 1-4-6
 7 years 1826 2-12-7

- Albury Thos. Woods for Upper Riddens (an obire) 2/4
 10 (?) yr. paid 1s Michaelmas
 Now Thornton 1801 1-3-4
 Expresced ??
 (check in Quit Rents)

Albury Richard Bonsey for Yari House 1-0-0
 pd. 1s Michaelmas 1800 7-4-0
 Land tax deducted
 " - for Year 4/- (?)
 5 year 1s Michaelmas 1805 4-0-0
 Land tax deducted
 4 years pd. 1s Mich^s 1809
 Land tax deducted 16/- 3-4-0
 2 years 1s Mich^s 1811 } 1-12-0
 Land tax deducted 8/- }
 3 years pd. 1s Mich^s 1814 } 2-8-0
 Land tax deducted }
 2 years 1s Mich^s 1816 } 1-12-0
 Land tax deducted }
 2 years 1s Mich. 1818 1-12-0
 by McEwen pd. 1s Mich^s 1825
 Paid 1s Mich^s 1825 2-8-0
 3 year, by Ric(?) Bonsey
 Land Tax deducted
 Now H(?) Drummond

Albury John Thos. Boorer for Stokeford Town $\frac{1}{2}$ 8d.
 12 years pd. 1s Michael^s 1800 8/-
 2 - - - - - 1802 1/4
 Robert Bonsey
 7 years pd. 1s Mich^s 1809 4/8
 2 - - - - - 1811 1/4

Nov 1811 27/7/30 (2) (2)
 27/7/30 1711-32
 27/7/30 1711-32
 27/7/19 1711-32 (1-6)
 27/7/31 (4)

COTTAGES AT BROOK

part of Hull House. Hotts.

Northside Cottage, Southside Cottage. The Cottage Brook Stores.

Date Tenant Copyholder Tenant Notes

1725	Shelford	H. Saunders		
1725(?)	Bredford	Ann Saunders		
1728	"	Henry Saunders		non
1750	"	Henry Saunders		non
1783	"	Henry Saunders		non
1787	"	Geo. Bowbrick		
1792	"	5 acres ^{copy} land	Geo Bowbrick, Henry 3 acres, more + Laurette	Thos. Jones
1802	"	Thos Jones	Joe Smith L. Lovelland	
1810	"	Thos Jones		
1832	"	James Rhoda		
1839	"	James Rhoda	Q Edsiv, Laurena Lovelland	
		? Thos Jones died ? non		

Date Tenor Copyholder/owner Tenor Notes

1922 - ¹⁹²⁵ Fred Holt. Mr & S. Fred Holt. Middle - Henry Ansell

1979 Sale. N. byr to Albert Thomas. Don Holt Don Holt Bernard Holt
 1983 " " " " Shap-Nicholas Brougher
 1985 Hilary " " " Ruth Goodwin

Part of Hillend called HULL HOUSE, parts
MEADOW COTTAGE, BROOK

~~Oakfield House Cottage. Brook Farm Cottage. Hull House (park)~~

<u>Date</u>	<u>Items</u>	<u>Copyholder</u>	<u>Tenant</u>	<u>Notes</u>
For 16	Hillends of Hillends --	between Hullcote & Lockwood Lane		20 A
17	Hillend, part of Starkehouse			16
18	Hullcote			4
19	Hullhouse, part	Cottage + acre + moor, 2 acres = 3 acres 4 acres + moor (2 + 2 + moor)		3 new fields 7
33	<u>Hullhouse</u>	Messuage, ¹⁰ Land Tenement, Barn, Stables, Buildings, Garden Orchards Beckridges & certain lands		9/6 30
124	Hullhouse, part.	Cottage or Tenement with garden	from 19	4d.

1792	(97/7/29)	Johanna Lucke vid	Thos Hemmard	dealt Johanna Lucke 9/6
1699	(97/7/32(i))	Thos Hemmard (pr. Hull House) ? Tenement?	Thos Hemmard	9/6
1727	(97/7/21)	Shepherd Bredaton	Thos Hemmard	Jess Allen 9/6 widow
1738	"	J. Worsfold. Wm. Nethfold. Thos Wekehen.		"survivors" of T.H.
1738	"	John Weston		of Gildesford
1752	"	Mary Weston		widow
1756	"	Jess Palmer		widow
1763	"	Ann Palmer		widow
1764	"	John Jones		
1794	"	Jas. Jones		son
1801	"	William Wells		
1821	"	Edward Wells		
1822	"	" " Jas Rudge		
1823	"	"		30 acres?

MEADOW COTTAGE Cont.

<u>Date</u>	<u>Tenant</u>	<u>Copyholder/ Owner</u>	<u>Tenant</u>	<u>Notes</u>
1825 32	Shelford Bradton "	H. Drummond "	(now for Mrs. H. H. H.) "	35 acres 9/6
1839	"	H. Drummond	Jan. Harrison	1 rood, 14 poles 2.28 5 6 1/2
58 1873	Enfranchisement of	Alston George, Duke of Northumberland		
1887			Mr. Dobson	
1888			Mr. Dobson	
1922	-		Miss Dobson	3 acres
1950	-		Miss Dobson	
	-		Miss Dobson	
1964	-	{ Sybil Beresford Pearce Iris Warren	{ Mike Widd = Tony? Hannah Curtis Rachel Kidman)
1971?	-	"	Carolie Wright	
1971	-	Carolie Wright		
1977	-	Carolie H. Hart	-	-

ALBURY ESTATE DOCUMENTS see "Duke of N.'s Surrey Honors." compilation by Thimble Room.

1322/14/36. "House at Brook, nr. Little London 1763.

1766 ... Mary, wife of John Harris (?) and Susannah, wife of John Rowland, daughters and coheirs (?) of Henry Risbridger, deceased, late a Customary Tenant of this Honor who held to him ^{hold?} did served (?) of the Lord of this Honor a Customary Messuage or Tenement with appurtenances situate and being at Brook near Little London in the Parish of Albury, and whose death was presented at Court held for this Honor in 1763 ... 12d. rev. Honor, Fealty
" Suit of Court. Fealty respited. £ 3-0-0 admission

and C Return 1851

1322/14/37. Coltège and Land at Brook 1795

Brook Coltège (? Brook Lodge) number

1795 ... General Court Baron ... Hon. Lady Finch, widow, Lady of Honor ...
- Absolute Surrender from Charles Oram to Mary Stamp.

..... " Charles Oram one of the Customary Tenants of this Honor out of Court surrendered into the hands of Thos. Stothrpe, Gent., the Steward of this Honor All that Coltège, heretofore in two Tenements, but now in one Tenement, and a parcel of land lying at Brook, within this Honor, heretofore in the occupation of Geo. Bowbrick and since of the said Charles Oram (to which he was admitted of a Court holder for this Honor on 6th day of May 1790) to the use of Mary Stamp of the Parish of Crenley, in the County of Surrey, single woman and her heirs

" Admitted by yearly rent, Honor, Suit of Court and other Customs, Services ... she gave to the Lady for a Fine ... admitted as a Tenant here of but her Fealty respited"

1322/14/38. " Coltège and Land at Brook 1846 "

" Elizabeth Locker of Herdwick St., Liverpool, spinster (surrendered) All that Coltège, heretofore in two Tenements, but now in one Tenement, Land and Premises lying at Brook within this ~~Brook~~ Honor, heretofore in the occupation of Charles Oram, but now of the said John Thompson and known by the name of Brook Coltège

John Thompson, a doctor of Medicine, paid Elizabeth Locker £300 for the surrender of the Tenement. Fine of 1/- for his admittance. Fealty respited.

1322/7/5. Refers to "Northwilt, alias Little London"

Not seen.

9/81

1322/1/7. Antony Peyto has build a cottage on the waste near to
le Brooke in le Northwote (Oct. 1646) to which he and his wife Kridges
were admitted as copyhold tenants (Jan. 1647)

1322/7/1. Trespass... Peter Wolfelde, farmer of Albury, for putting
8 nose sheep on le Hulle (Oct. 1411)

Edmond Croft, rector of the church of Weston, for
trespassing with pigs in le Hulle. (Oct. 1438 - Oct. 1440)

9/87

? Hill Luck, 1455

97/7/29. Thos Hemmond admitted 1702 on death of Johanna Lucke vid
K a. Throuse of Tenenar with the Barons Stables Builders Gardens
Orchards Backlands and certain Lands containing thirty acres called Hall House

9/6

• Sanders, Henry admitted 1703 on death of Hansard K a Croft of Land
containing four acres called Hull now in Albury held by ye. v. of 20.

• The same Henry Sanders admitted 1709 on death of Thos. Warden

K a Thorksept (?) or Indenture (?) certain lands called Stickhouse.... 5/6

• And also K certain other lands called Newfields 2/6

• And also K certain other lands called Hullands in Albury 2/8

• John Dibbs hold certain lands called Lapscorn in Albury (3/83)

GUILD FORD ENVIRONMENT ROOM

Documents relating to the Manors of Shelford Bretonston and Shelford
Chyford. Also Somersbury, Ewhurst.

		Latin	other end of book	Latin
- 97/7/1	Court Rolls	Latin	B + C	1558 - 1602
- 7/2	Bills	Latin	B + C	1617 - 1631
7/3-6	Court Rolls		C	1559 - 1642
7/7-13	"		C	1732 - 1768
14	"		B	1711 - 32
15	"		B	1734 - 7
16	"		B	1747 - 1758
17	"		B	1758 - 1767
X 18	"		B	1768 - 1783
X 7/19	Court Rolls Book (Index 1915)		B	1783 - 1852
X 20	"		B	1855 - 1966
97/7/21	Draft Court Book		B + C	1873 - 1891
22 (1-2)	Minute Book of Courts		B + C	1811 - 1932
23 (1-5)	"		B + C	1823 - 1912
24 (1-4)	Minute Book		B	1856 - 1905
X 25	Abstract Book Mr. Nicholas'		C	1558 - 1702
X 26	"		C	1703? -
X 27	"		B	1709 - 1839
- 28 (1-2)	List Tenants		C	- 1714
✓ 29	" note book, hand - written		B	1699 prov - 1715
- 30 (1-5)	Rent Rolls		B + C	1738-47. 1775. 1875 1876
31 (13)	" (4 done)		C	X 4 = 1719 1662 - 1841
31 (14-20)	"		C	1832
- 32 (1-13)	" (1-6 done)		B	X 1699, X early 18, X 1719, X 1727/9 X 1729/32, X 1832-7, 1555 1860 1868 1875 1883 1903 1783 9 10 11 12 1553
X 33	Quit Rent Book		B + C	
- 34 (1)	" " "		B	1871 - 1890
(2)	" " "		C	1871 - 77
(3)	Valnet - recent Copyholds		C	1875
- (4)	"		B	1875
- (5)	Fines & Fees		B + C	1855 - 75
- (6)	Return of Quit Rents		B + C	1805
35	Court Minutes		C	1775 - 1810
36	Draft " "			1828 - 39
37	Admissions		C	1767 - 1877
38 (1-57)	Surrenders		C	1769 - 1810
39 (1-48)	Absolute Surrenders		C	1831 - 1898
40 (1-15)	Conditional " "		C	1831 - 1877
41 (1-11)	" " etc		C	1852 - 1900
42 (1-5)	Hinc.		C	
43 (1-4)	Letters of Attorney.			1819 - 1829

44 (1-17)	Draft Enfranchisements	C.	1874-23
45 (1-133)	Surrenders	B	1773-1922
46 (1-23)	Draft Enfranchisements	B	1870-1922
47	Stonards Hall	B	1765-1817
48 (1-6)	Copyholds	B	
49	Compensation Agreements	B	
50	Misc.	B	
51	Questionnaire - Endowse of Farley Health		
52	Expenses of Courts	B + C	
52 (1-8)	Admissions	B	1728-1922
(1-20)	Misc	B + C	1701-1920
53 (1-14)	Business to be Done	B + C	1873-1880
54	Gen. Letter, appoint ^d as Steward	B + C	June 1830
55 (1-5)	Draft Enfranchisements	B + C	1887-1902
56 (1-10)	Wills	B + C	1863-1880
57 (1-9)	Correspondence Tickner's Health; Pound Cott.	B + C	
58	To remove copies	B + C	1913
59	The Manor of Sowersbury, Ewhurst.	S	
60	Rent Rolls for ditto	S	
61	Enfranchisements -	S	
62	Arrears of Quit Rents	B. C. + S.	1877
63	Quit Rents due		1877-1930
64	Quit Rents	B. C. + S.	1885-1889
65	Map of Shalford Common.		

1191/2 Antony Brown's Notebook: "Albury Village before W.C. Finch got out of his coffin"
 52/1/2. Bailiff's (?) Notebook. 1800-02. Fascinated.

Stanley Green

- The Manors of Clifford & Bredston cover parts of Alford, Albury, Waverot, Shalford
 - These manors were sold to Her Majesty R.D.C. in 1957.
 - Albury means Brook, S. of Low Brook and Farley Gills.
- ALBURY - MANORS - Albury (bought by H. Finch 1st Earl Aylesford 1680)
- Weston Gunsholl (Weston Hs. village)
 - Weston Manor (nr. 1st prod. & house). "Weston is (outwashed part of) SHER" vachry, Ebor. Canohell Nally. Gunsholl Towerhill
- SHERE Chisworth. Tyling
- CHILWORTH Chisworth. Tyling
- SHALFORD E. Shalford (Bredston) 1779 Robert Anstis (sec^y of G. A's)
 Clifford 1726 bought by Lord Onslow
 Vinsted
 Rectory Manor

ALBURY ESTATE2¹⁰/80

- ✓ The Duke of Northumberland's Survey Maps, No. 1322. A Typed list book.
incl. List of Lords and Stewards in Albury Manor
" - Rectors - Albury - Weston Weston Gunshill Manor.
1322/4/1-31. Whole Estate Rentals 1589-1905
1322/14/24-26 Acquisitions, incl. "Hellands", 12 acres 1822
1322/14/36 "House at Brook, nr. Little London". 1763
1322/14/37-38. "College and Land at Brook". 1795-1846
1322/1/1-25 Court Rolls, Albury Manor 1399-1937
7/1-9 - - - Weston Gunshill. 1399-1937
1322/7/5 refers to 'Northwote, alias Little London'.
✗ 1322/1/4 Antony Keyte - built a waste near Le Brooke in the Northwote
✗ 1322/7/1 Trespassing on the Hill

- Estate Maps (copies) ✓ 1782 Clement Finch's Lands (map of Weston Ho.)
1788 Weston Gunshill (shows Weston Ho. & houses in Weston St.)
1772 Shere Eborac Wm. Bray
8 ✓ ? 1800-02. Weston Gunshill Wm. Godschell Eng. d 1809
2 ✓ 1701 Ristredde
7 ✓ ? Weston Gunshill R. Godschell.

New Road = Road to Gunshill

Does "Sandy Lane" = Semours Lane - probably road to Park

Sherborn = Shere (Shere) house.

Sherborne = Road to Downs

ALBURY ESTATE OFFICE

Map No. 46 = 1792
 ✓ 1791
 ✓ 57 = 1792 - Hens towards the ... v.s. All field notes

ALBURY ESTATE OFFICE - MAPS

- ✓ Land in Albury Parish of John Warden. x Den^d Seale Peell 4cl: 1" 1695
- ✓ Tenor of Albury x Abraham Waller 2 1/2" 40 parcel 1701 56
- ✓ Holders Farm - Worsell - Albury Parishes - Nath^d Stuart (occ^d Dhyer) x J^m Harding 4cl: 1" 17 22 26?
- ✓ Old Warren Albury. of Wm. Godscall. x Thos^d Richardson 3 rods: 1" parcel 1724?
- ✓ Post Road Estate - P^os of Albury, Shire & Sr. Martie. Jas Snodgrass x Thos. Dennis Peell 4cl: 1" 1773
- ✓ Upper Ridings & Dees Acre (Estate). Albury Par. Thos. Woods x Ed^d Lilly 4cl: 1" Peell. 1776
- ✓ Weston Tlenour. Rob^d Godscall (1742) 55 4cl: 1" Paper mid (18)
- ✓ Tenor. Deane Lands - W^olter Gunshale Wm Godscall 53 4cl: 1" Ini beched. late (18)
- ✓ Albury Parish Globe Lands 3cl: 1" Paper (18)
- ✓ Albury Park Estate (P^os - Albury, Shire, Worsell). H^m Drummond x J^m Herwin 6cl: 1" Paper 1820 57
- ✓ Albury Title Map - enlarged + Appurtenances x H. Waller 3cl: 1" 1839
- ✓ O.S. Albury Park/Share 1/2500 1896 1870
- ✓ Lands Farm (Stonewall Farm) for Nathaniel Stuart, Gen. Parchment 1724

"Park" area 1862 shows chapel & woods. W. Fall

OWN MAPS

SHERE

Title Map 1844. Complete for all houses

O.S. 1870
1/2500 Shere N, Shere S, Shere Combined, Cottrells; Harold Ho.
Hoe Farm; Sutton^W; Peaslake S; Peaslake N, Hazel Hall
Lane End Fm, Overkers; Lane End, Lambrook. Peaslake, Hoe.
Sutton E.

O.S. 1896
1/2500 Shere N, Shere S, Shere Combined

O.S. 1914 Sutton (tracing)

O.S. 6" / 1 mile Peaslake. Shere, Gresham, Abinger - 2; Peaslake

Modern Shere - 2. Shere, surveyors. Peaslake (pr. named); Peaslake, named, large
Sutton. the Lane, Sutton (named)

Title: Sutton, estate; pr. Sutton, estate; Shere 17^c & 18^c, Sutton 1724.

EWING

1844 like map - 2

0.5 1/2500. 1896 1916

0.5 6" / 1 mile - 1870. 2 - 1 enlarged.

OWN MAPS

ALBURY

Tilke Map 1839 Complete. Small. Appurtenances
" Traced. Albury village & Albury Park. Brook & L. London
Middle Farm; Farley Grn. (Treason); Taylor house - Pir house

O.S. 1870 Albury village (2pts) Albury Park (4pts.)
1/2500 Brook - L. London (tracing); Dillon - Lockhurst H. (tracing)
Ponds Fm - L. London, Hull Ho. - Farley Grn. (tracing)
Ford Fm - Postford Fm. (tracing)

O.S. 1896 Albury village (2pts) Albury Park (4pts.), Farley Green
1/2500 Brook - L. London (overlap); Hull Ho. - Middle Farm
Ford Fm - Postford Fm. (tracing)

O.S. 1934 1/2500. Brook - L. London. Brook
1973 " Weston Ho. (tracing) - in misc.
" Oddments - Ponds Farm 1896, 1916, 1870. Brook 1896, 1916.

O.S. 1870 6":1 in. Albury

Albury Planor 1701. R.C. Welmsley

Albury Park 1782 Theo. Wedge. Small. Enlarged. for Wm. Clever Fich

Albury Planor 1701 Abr. Walter. Small. Enlarged.

Albury Park Estate 1820 for H. Drummond (excluding Chelworth & Woodhill)
" N.W. corner (Share)

Weston Planor early 18c. Robert Godshall

Weston Planor late 18c. Wm. Hen. Godshall. (2)
1782 Theo. Wedge for Wm. Clever Fich (2)

Fields. Brook - Shop house Farm - tracing.

